

**DATASHEET**

**SLC7A2 Rabbit Polyclonal Antibody**

CAT. NO. APA16913

**KEY FEATURES**

Target	SLC7A2	Source / Host	Rabbit
Reactivity	Human, Mouse, Rat	Clonality	Polyclonal
Applications	WB, IHC	Conjugation	Unconjugated
Form / Buffer	Liquid in 0.42% Potassium phosphate, 0.87% Sodium chloride, pH 7.3, 30% glycerol, and 0.01% sodium azide.	Storage	at-20°C

**BACKGROUND**

Functions as a permease involved in the transport of the cationic amino acids (L-arginine, L-lysine, L-ornithine and L-homoarginine); the affinity for its substrates differs between isoforms created by alternative splicing ; the affinity for its substrates differs between isoforms created by alternative splicing . May play a role in classical or alternative activation of macrophages via its role in arginine transport .

**APPLICATION**

To ensure optimal assay performance, AREX recommends conducting reagent titration tailored to each testing system for optimal detection results.

WB	1:500 - 1:2000
IHC	1:50 - 1:200

\*Results are sample-specific. Please refer to your local assay conditions and test parameters for reference.

**PRODUCT OVERVIEW**

Description	Rabbit polyclonal antibody to SLC7A2
Specificity	Recognizes endogenous levels of SLC7A2 protein
Antibody Type	Primary antibody
Immunogen	KLH-conjugated synthetic peptide of human SLC7A2. The exact sequence is proprietary.
Purification	The antibody was purified by immunogen affinity chromatography.
Molecular Weight	Predicted: 71; Observed: 72 kD
Form/Buffer	Liquid in 0.42% Potassium phosphate, 0.87% Sodium chloride, pH 7.3, 30% glycerol, and 0.01% sodium azide.
Alternative Names	ATRC2; CAT2; Low affinity cationic amino acid transporter 2; CAT-2; CAT2; Solute carrier family 7 member 2
Gene Symbol	SLC7A2
Entrez Gene	6542(Human); 11988(Mouse); 64554(Rat)
SwissProt	P52569(Human); P18581(Mouse); B5D5N9(Rat)

\*AREX continuously optimizes our products. Webpage content may not reflect the latest updates. For inquiries, please contact [info@arex.bio](mailto:info@arex.bio) or your local distributor.

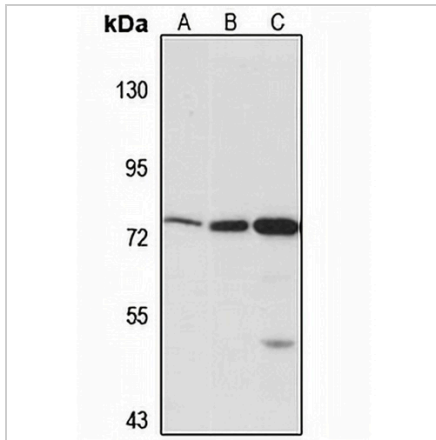
\*Clone Number, Reactivity, Source/Host and Clonality can be found in the product name and Key Features section above.

**DATASHEET**

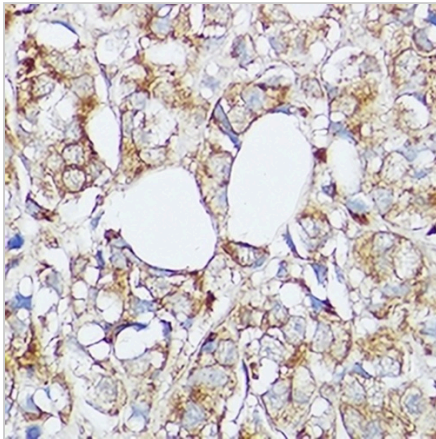
**SLC7A2 Rabbit Polyclonal Antibody**

CAT. NO. APA16913

**DATA**



Western blot analysis of SLC7A2 expression in HepG2 (A), mouse brain (B), rat liver (C) whole cell lysates. (Predicted band size: 71; 75; 76 kD; Observed band size: 72 kD)



Immunohistochemical analysis of SLC7A2 staining in human breast cancer formalin fixed paraffin embedded tissue section. The section was pre-treated using heat mediated antigen retrieval with sodium citrate buffer (pH 6.0). The section was then incubated with the antibody at room temperature and detected using an HRP conjugated compact polymer system. DAB was used as the chromogen. The section was then counterstained with haematoxylin and mounted with DPX.

**STORAGE**

Store at 4°C short term. For long term storage, store at -20°C, avoiding freeze/thaw cycles.

**NOTE**

For Research Use Only. Not for diagnostic, therapeutics, prophylactic or in vivo use.