

DATASHEET

SLURP1 Rabbit Polyclonal Antibody

CAT. NO. APA16919

KEY FEATURES

Target	SLURP1	Source / Host	Rabbit
Reactivity	Human, Mouse, Rat	Clonality	Polyclonal
Applications	WB	Conjugation	Unconjugated
Form / Buffer	Liquid in 0.42% Potassium phosphate, 0.87% Sodium chloride, pH 7.3, 30% glycerol, and 0.01% sodium azide.		Storage at -20°C

BACKGROUND

Has an antitumor activity . Was found to be a marker of late differentiation of the skin. Implicated in maintaining the physiological and structural integrity of the keratinocyte layers of the skin . In vitro down-regulates keratinocyte proliferation; the function may involve the proposed role as modulator of nicotinic acetylcholine receptors (nAChRs) activity. In vitro inhibits alpha-7-dependent nAChR currents in an allosteric manner . In T cells may be involved in regulation of intracellular Ca(2+) signaling . Seems to have an immunomodulatory function in the cornea . The function may implicate a possible role as a scavenger receptor for PLAU thereby blocking PLAU-dependent functions of PLAU such as in cell migration and proliferation .

APPLICATION

To ensure optimal assay performance, AREX recommends conducting reagent titration tailored to each testing system for optimal detection results.

WB	1:500 - 1:2000
----	----------------

*Results are sample-specific. Please refer to your local assay conditions and test parameters for reference.

PRODUCT OVERVIEW

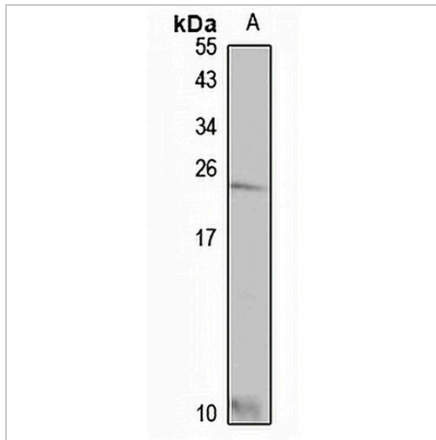
Description	Rabbit polyclonal antibody to SLURP1
Specificity	Recognizes endogenous levels of SLURP1 protein
Antibody Type	Primary antibody
Immunogen	Recombinant fusion protein of human SLURP1. The exact sequence is proprietary.
Purification	The antibody was purified by immunogen affinity chromatography.
Molecular Weight	Predicted: 11 kD; Observed: 11 kD
Form/Buffer	Liquid in 0.42% Potassium phosphate, 0.87% Sodium chloride, pH 7.3, 30% glycerol, and 0.01% sodium azide.
Alternative Names	ARS; Secreted Ly-6/uPAR-related protein 1; SLURP-1; ARS component B; ARS(component B)-81/S; Anti-neoplastic urinary protein; ANUP
Gene Symbol	SLURP1
Entrez Gene	57152(Human); 57277(Mouse)
SwissProt	P55000(Human); Q9Z0K7(Mouse)

*AREX continuously optimizes our products. Webpage content may not reflect the latest updates. For inquiries, please contact info@arexbio.com or your local distributor.

*Clone Number, Reactivity, Source/Host and Clonality can be found in the product name and Key Features section above.

DATASHEET**SLURP1 Rabbit Polyclonal Antibody**

CAT. NO. APA16919

DATA

Western blot analysis of SLURP1 expression in mouse heart (A) whole cell lysates.
(Predicted band size: 11 kD; Observed band size: 11 kD)

STORAGE

Store at 4°C short term. For long term storage, store at -20°C, avoiding freeze/thaw cycles.

NOTE

For Research Use Only. Not for diagnostic, therapeutics, prophylactic or in vivo use.