

DATASHEET

SMAD1/5/9 Rabbit Polyclonal Antibody

CAT. NO. APA16920

KEY FEATURES

Target	SMAD1/5/9	Source / Host	Rabbit
Reactivity	Human, Mouse, Rat	Clonality	Polyclonal
Applications	WB	Conjugation	Unconjugated
Form / Buffer	Liquid in 0.42% Potassium phosphate, 0.87% Sodium chloride, pH 7.3, 30% glycerol, and 0.01% sodium azide.		Storage at-20°C

BACKGROUND

Transcriptional modulator that plays a role in various cellular processes, including embryonic development, cell differentiation, and tissue homeostasis . Upon BMP ligand binding to their receptors at the cell surface, is phosphorylated by activated type I BMP receptors (BMPRI) and associates with SMAD4 to form a heteromeric complex which translocates into the nucleus acting as transcription factor . In turn, the hetero-trimeric complex recognizes cis-regulatory elements containing Smad Binding Elements (SBEs) to modulate the outcome of the signaling network . SMAD1/OAZ1/PSMB4 complex mediates the degradation of the CREBBP/EP300 repressor SNIP1 . Positively regulates BMP4-induced expression of odontogenic development regulator MSX1 following IPO7-mediated nuclear import .

APPLICATION

To ensure optimal assay performance, AREX recommends conducting reagent titration tailored to each testing system for optimal detection results.

WB	1:500 - 1:2000
----	----------------

*Results are sample-specific. Please refer to your local assay conditions and test parameters for reference.

PRODUCT OVERVIEW

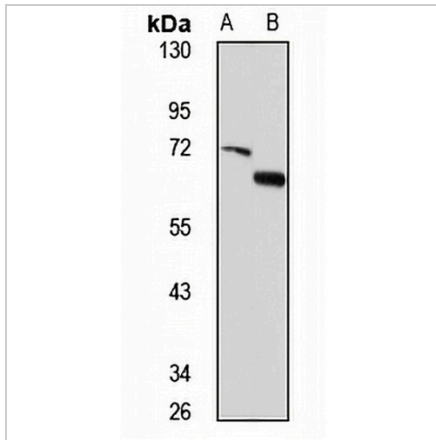
Description	Rabbit polyclonal antibody to SMAD1/5/9
Specificity	Recognizes endogenous levels of SMAD1/5/9 protein
Antibody Type	Primary antibody
Immunogen	Recombinant fusion protein of human SMAD1/5/9. The exact sequence is proprietary.
Purification	The antibody was purified by immunogen affinity chromatography.
Molecular Weight	Predicted: 52 kD; Observed: 60 kD
Form/Buffer	Liquid in 0.42% Potassium phosphate, 0.87% Sodium chloride, pH 7.3, 30% glycerol, and 0.01% sodium azide.
Alternative Names	BSP1; MADH1; MADR1; Mothers against decapentaplegic homolog 1; MAD homolog 1; Mothers against DPP homolog 1; JV4-1; Mad-related protein 1; SMAD family member 1; SMAD 1; Smad1; hSMAD1; Transforming growth factor-beta-signaling protein 1; BSP-1; MADH5; Mothers against decapentaplegic homolog 5; MAD homolog 5; Mothers against DPP homolog 5; JV5-1; SMAD family member 5; SMAD 5; Smad5; hSmad5; MADH6; MADH9; Mothers against decapentaplegic homolog 9; MAD homolog 9; Mothers against DPP homolog 9; Madh6; SMAD family member 9; SMAD 9; Smad9
Gene Symbol	SMAD1; SMAD5; SMAD9
Entrez Gene	4086; 4090; 4093(Human); 17125; 17129; 55994(Mouse)
SwissProt	Q15797; Q99717; O15198(Human); P70340; P97454; Q9JIW5(Mouse)

*AREX continuously optimizes our products. Webpage content may not reflect the latest updates. For inquiries, please contact info@arexbio.com or your local distributor.

*Clone Number, Reactivity, Source/Host and Clonality can be found in the product name and Key Features section above.

DATASHEET**SMAD1/5/9 Rabbit Polyclonal Antibody**

CAT. NO. APA16920

DATA

Western blot analysis of SMAD1/5/9 expression in HT1080 (A), mouse testis (B) whole cell lysates. (Predicted band size: 52 kD; Observed band size: 60 kD)

STORAGE

Store at 4°C short term. For long term storage, store at -20°C, avoiding freeze/thaw cycles.

NOTE

For Research Use Only. Not for diagnostic, therapeutics, prophylactic or in vivo use.