

## DATASHEET

# SMC4 Rabbit Polyclonal Antibody

CAT. NO. APA16922

### KEY FEATURES

Target	SMC4	Source / Host	Rabbit
Reactivity	Human, Mouse	Clonality	Polyclonal
Applications	WB	Conjugation	Unconjugated
Form / Buffer	Liquid in 0.42% Potassium phosphate, 0.87% Sodium chloride, pH 7.3, 30% glycerol, and 0.01% sodium azide.		Storage at -20°C

### BACKGROUND

Central component of the condensin complex, a complex required for conversion of interphase chromatin into mitotic-like condense chromosomes. The condensin complex probably introduces positive supercoils into relaxed DNA in the presence of type I topoisomerases and converts nicked DNA into positive knotted forms in the presence of type II topoisomerases.

### APPLICATION

To ensure optimal assay performance, AREX recommends conducting reagent titration tailored to each testing system for optimal detection results.

WB	1:500 - 1:2000
----	----------------

\*Results are sample-specific. Please refer to your local assay conditions and test parameters for reference.

### PRODUCT OVERVIEW

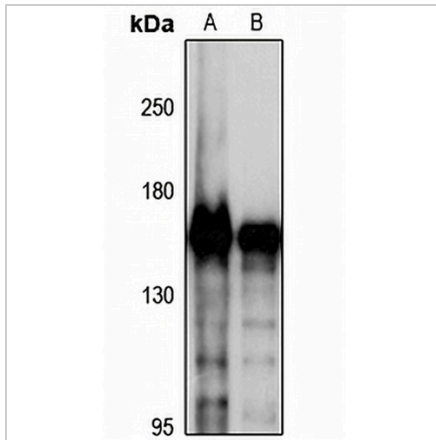
Description	Rabbit polyclonal antibody to SMC4
Specificity	Recognizes endogenous levels of SMC4 protein
Antibody Type	Primary antibody
Immunogen	KLH-conjugated synthetic peptide of human SMC4. The exact sequence is proprietary.
Purification	The antibody was purified by immunogen affinity chromatography.
Molecular Weight	Predicted: 140; Observed: 147 kD
Form/Buffer	Liquid in 0.42% Potassium phosphate, 0.87% Sodium chloride, pH 7.3, 30% glycerol, and 0.01% sodium azide.
Alternative Names	CAPC; SMC4L1; Structural maintenance of chromosomes protein 4; SMC protein 4; SMC-4; Chromosome-associated polypeptide C; hCAP-C; XCAP-C homolog
Gene Symbol	SMC4
Entrez Gene	10051(Human); 70099(Mouse)
SwissProt	Q9NTJ3(Human); Q8CG47(Mouse)

\*AREX continuously optimizes our products. Webpage content may not reflect the latest updates. For inquiries, please contact [info@arexbio.com](mailto:info@arexbio.com) or your local distributor.

\*Clone Number, Reactivity, Source/Host and Clonality can be found in the product name and Key Features section above.

**DATASHEET****SMC4 Rabbit Polyclonal Antibody**

CAT. NO. APA16922

**DATA**

Western blot analysis of SMC4 expression in MCF7 (A), Raji (B) whole cell lysates. (Predicted band size: 140; 147 kD; Observed band size: 147 kD)

**STORAGE**

Store at 4°C short term. For long term storage, store at -20°C, avoiding freeze/thaw cycles.

**NOTE**

For Research Use Only. Not for diagnostic, therapeutics, prophylactic or in vivo use.