

**DATASHEET**

**SMG6 Rabbit Polyclonal Antibody**

CAT. NO. APA16924

**KEY FEATURES**

Target	SMG6	Source / Host	Rabbit
Reactivity	Human, Rat	Clonality	Polyclonal
Applications	WB	Conjugation	Unconjugated
Form / Buffer	Liquid in 0.42% Potassium phosphate, 0.87% Sodium chloride, pH 7.3, 30% glycerol, and 0.01% sodium azide.		Storage at -20°C

**BACKGROUND**

Component of the telomerase ribonucleoprotein (RNP) complex that is essential for the replication of chromosome termini . May have a general role in telomere regulation . Promotes in vitro the ability of TERT to elongate telomeres . Overexpression induces telomere uncapping, chromosomal end-to-end fusions (telomeric DNA persists at the fusion points) and did not perturb TRF2 telomeric localization . Binds to the single-stranded 5'-(GTGTGG)(4)GTGT-3' telomeric DNA, but not to a telomerase RNA template component (TER) .

**APPLICATION**

To ensure optimal assay performance, AREX recommends conducting reagent titration tailored to each testing system for optimal detection results.

WB	1:500 - 1:2000
----	----------------

\*Results are sample-specific. Please refer to your local assay conditions and test parameters for reference.

**PRODUCT OVERVIEW**

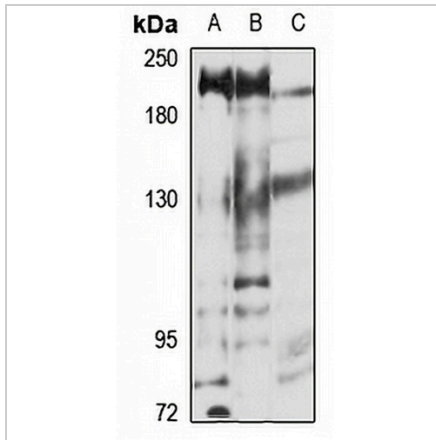
Description	Rabbit polyclonal antibody to SMG6
Specificity	Recognizes endogenous levels of SMG6 protein
Antibody Type	Primary antibody
Immunogen	Recombinant fusion protein of human SMG6. The exact sequence is proprietary.
Purification	The antibody was purified by immunogen affinity chromatography.
Molecular Weight	Predicted: 37; Observed: 210 kD
Form/Buffer	Liquid in 0.42% Potassium phosphate, 0.87% Sodium chloride, pH 7.3, 30% glycerol, and 0.01% sodium azide.
Alternative Names	C17orf31; EST1A; KIAA0732; Telomerase-binding protein EST1A; EST1-like protein A; Ever shorter telomeres 1A; Smg-6 homolog; Telomerase subunit EST1A; hSmg5/7a
Gene Symbol	SMG6
Entrez Gene	23293(Human)
SwissProt	Q86US8(Human)

\*AREX continuously optimizes our products. Webpage content may not reflect the latest updates. For inquiries, please contact [info@arexbio.com](mailto:info@arexbio.com) or your local distributor.

\*Clone Number, Reactivity, Source/Host and Clonality can be found in the product name and Key Features section above.

**DATASHEET****SMG6 Rabbit Polyclonal Antibody**

CAT. NO. APA16924

**DATA**

Western blot analysis of SMG6 expression in Jurkat (A), SW620 (B), rat liver (C) whole cell lysates. (Predicted band size: 37; 57; 160 kD; Observed band size: 210 kD)

**STORAGE**

Store at 4°C short term. For long term storage, store at -20°C, avoiding freeze/thaw cycles.

**NOTE**

For Research Use Only. Not for diagnostic, therapeutics, prophylactic or in vivo use.