

DATASHEET

N-SMase Rabbit Polyclonal Antibody

CAT. NO. APA16925

KEY FEATURES

Target	N-SMase	Source / Host	Rabbit
Reactivity	Human, Mouse, Rat	Clonality	Polyclonal
Applications	WB, IHC	Conjugation	Unconjugated
Form / Buffer	Liquid in 0.42% Potassium phosphate, 0.87% Sodium chloride, pH 7.3, 30% glycerol, and 0.01% sodium azide.		Storage at-20°C

BACKGROUND

Catalyzes, at least in vitro, the hydrolysis of sphingomyelin to form ceramide and phosphocholine . Also hydrolyzes 1-O-alkyl-2-lyso-sn-glycero-3-phosphocholine (lyso-platelet-activating factor) in vivo . Also acts on 1-acyl-2-lyso-sn-glycero-3-phosphocholine (lyso-PC) and sphingosylphosphocholine .

APPLICATION

To ensure optimal assay performance, AREX recommends conducting reagent titration tailored to each testing system for optimal detection results.

WB	1:500 - 1:2000
IHC	1:50 - 1:200

*Results are sample-specific. Please refer to your local assay conditions and test parameters for reference.

PRODUCT OVERVIEW

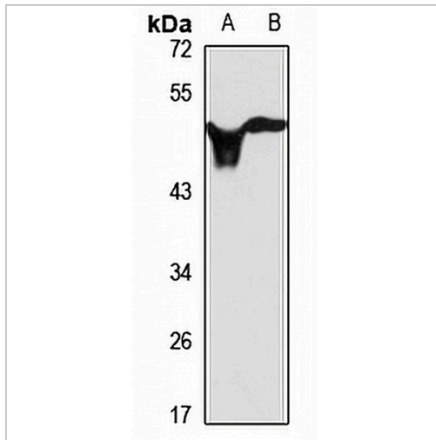
Description	Rabbit polyclonal antibody to N-SMase
Specificity	Recognizes endogenous levels of N-SMase protein
Antibody Type	Primary antibody
Immunogen	KLH-conjugated synthetic peptide of human N-SMase. The exact sequence is proprietary.
Purification	The antibody was purified by immunogen affinity chromatography.
Molecular Weight	Predicted: 47 kD; Observed: 50 kD
Form/Buffer	Liquid in 0.42% Potassium phosphate, 0.87% Sodium chloride, pH 7.3, 30% glycerol, and 0.01% sodium azide.
Alternative Names	Sphingomyelin phosphodiesterase 2; Lyso-platelet-activating factor-phospholipase C; Lyso-PAF-PLC; Neutral sphingomyelinase; N-SMase; nSMase
Gene Symbol	SMPD2
Entrez Gene	6610(Human); 20598(Mouse); 83537(Rat)
SwissProt	O60906(Human); O70572(Mouse); Q9ET64(Rat)

*AREX continuously optimizes our products. Webpage content may not reflect the latest updates. For inquiries, please contact info@arexbio.com or your local distributor.

*Clone Number, Reactivity, Source/Host and Clonality can be found in the product name and Key Features section above.

DATASHEET**N-SMase Rabbit Polyclonal Antibody**

CAT. NO. APA16925

DATA

Western blot analysis of N-SMase expression in mouse liver (A), rat liver (B) whole cell lysates. (Predicted band size: 47 kD; Observed band size: 50 kD)

STORAGE

Store at 4°C short term. For long term storage, store at -20°C, avoiding freeze/thaw cycles.

NOTE

For Research Use Only. Not for diagnostic, therapeutics, prophylactic or in vivo use.