

DATASHEET

N-SMase3 Rabbit Polyclonal Antibody

CAT. NO. APA16926

KEY FEATURES

Target	N-SMase3	Source / Host	Rabbit
Reactivity	Human	Clonality	Polyclonal
Applications	WB, IF/ICC	Conjugation	Unconjugated
Form / Buffer	Liquid in 0.42% Potassium phosphate, 0.87% Sodium chloride, pH 7.3, 30% glycerol, and 0.01% sodium azide.		Storage at-20°C

BACKGROUND

Catalyzes the hydrolysis of membrane sphingomyelin to form phosphorylcholine and ceramide . It has a relevant role in the homeostasis of membrane sphingolipids, thereby influencing membrane integrity, and endoplasmic reticulum organization and function . May sensitize cells to DNA damage-induced apoptosis . In skeletal muscle, mediates TNF-stimulated oxidant production .

APPLICATION

To ensure optimal assay performance, AREX recommends conducting reagent titration tailored to each testing system for optimal detection results.

WB	1:500 - 1:2000
IF/ICC	1:50 - 1:200

*Results are sample-specific. Please refer to your local assay conditions and test parameters for reference.

PRODUCT OVERVIEW

Description	Rabbit polyclonal antibody to N-SMase3
Specificity	Recognizes endogenous levels of N-SMase3 protein
Antibody Type	Primary antibody
Immunogen	Recombinant fusion protein of human N-SMase3. The exact sequence is proprietary.
Purification	The antibody was purified by immunogen affinity chromatography.
Molecular Weight	Predicted: 44; Observed: 100 kD
Form/Buffer	Liquid in 0.42% Potassium phosphate, 0.87% Sodium chloride, pH 7.3, 30% glycerol, and 0.01% sodium azide.
Alternative Names	KIAA1418; Sphingomyelin phosphodiesterase 4; Neutral sphingomyelinase 3; nSMase-3; nSMase3; Neutral sphingomyelinase III
Gene Symbol	SMPD4
Entrez Gene	55627(Human)
SwissProt	Q9NXE4(Human)

*AREX continuously optimizes our products. Webpage content may not reflect the latest updates. For inquiries, please contact info@arexbio.com or your local distributor.

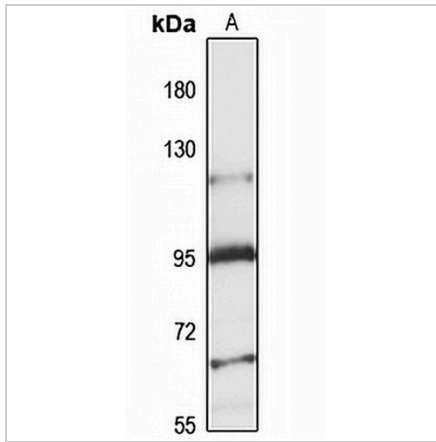
*Clone Number, Reactivity, Source/Host and Clonality can be found in the product name and Key Features section above.

DATASHEET

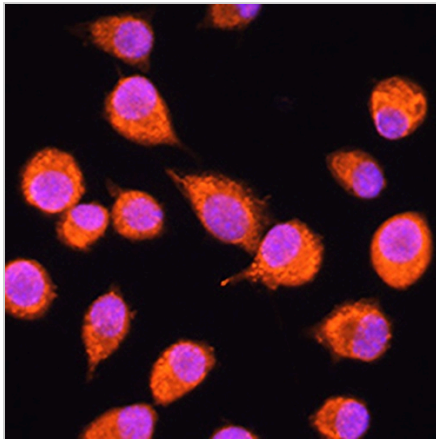
N-SMase3 Rabbit Polyclonal Antibody

CAT. NO. APA16926

DATA



Western blot analysis of N-SMase3 expression in A549 (A) whole cell lysates. (Predicted band size: 44; 56-69; 83-98 kD; Observed band size: 100 kD)



Immunofluorescent analysis of N-SMase3 staining in L929 cells. Formalin-fixed cells were permeabilized with 0.1% Triton X-100 in TBS for 5-10 minutes and blocked with 3% BSA-PBS for 30 minutes at room temperature. Cells were probed with the primary antibody in 3% BSA-PBS and incubated overnight at 4 °C in a humidified chamber. Cells were washed with PBST and incubated with a AREX® Fluor 594-conjugated secondary antibody (red) in PBS at room temperature in the dark. DAPI was used to stain the cell nuclei (blue).

STORAGE

Store at 4°C short term. For long term storage, store at -20°C, avoiding freeze/thaw cycles.

NOTE

For Research Use Only. Not for diagnostic, therapeutics, prophylactic or in vivo use.