

DATASHEET

Smurf1 Rabbit Polyclonal Antibody

CAT. NO. APA16927

KEY FEATURES

Target	Smurf1	Source / Host	Rabbit
Reactivity	Human, Mouse	Clonality	Polyclonal
Applications	WB	Conjugation	Unconjugated
Form / Buffer	Liquid in 0.42% Potassium phosphate, 0.87% Sodium chloride, pH 7.3, 30% glycerol, and 0.01% sodium azide.		Storage at-20°C

BACKGROUND

E3 ubiquitin-protein ligase that acts as a negative regulator of BMP signaling pathway. Mediates ubiquitination and degradation of SMAD1 and SMAD5, 2 receptor-regulated SMADs specific for the BMP pathway. Promotes ubiquitination and subsequent proteasomal degradation of TRAF family members and RHOA. Promotes ubiquitination and subsequent proteasomal degradation of MAVS . Acts as an antagonist of TGF-beta signaling by ubiquitinating TGFBR1 and targeting it for degradation . Plays a role in dendrite formation by melanocytes .

APPLICATION

To ensure optimal assay performance, AREX recommends conducting reagent titration tailored to each testing system for optimal detection results.

WB	1:500 - 1:2000
----	----------------

*Results are sample-specific. Please refer to your local assay conditions and test parameters for reference.

PRODUCT OVERVIEW

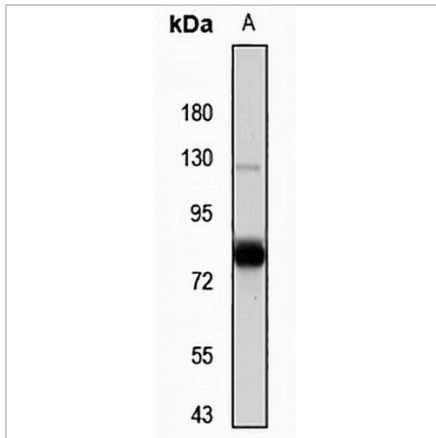
Description	Rabbit polyclonal antibody to Smurf1
Specificity	Recognizes endogenous levels of Smurf1 protein
Antibody Type	Primary antibody
Immunogen	KLH-conjugated synthetic peptide of human Smurf1. The exact sequence is proprietary.
Purification	The antibody was purified by immunogen affinity chromatography.
Molecular Weight	Predicted: 83; Observed: 86 kD
Form/Buffer	Liquid in 0.42% Potassium phosphate, 0.87% Sodium chloride, pH 7.3, 30% glycerol, and 0.01% sodium azide.
Alternative Names	KIAA1625; E3 ubiquitin-protein ligase SMURF1; hSMURF1; SMAD ubiquitination regulatory factor 1; SMAD-specific E3 ubiquitin-protein ligase 1
Gene Symbol	SMURF1
Entrez Gene	57154(Human); 75788(Mouse)
SwissProt	Q9HCE7(Human); Q9CUN6(Mouse)

*AREX continuously optimizes our products. Webpage content may not reflect the latest updates. For inquiries, please contact info@arexbio.com or your local distributor.

*Clone Number, Reactivity, Source/Host and Clonality can be found in the product name and Key Features section above.

DATASHEET**Smurf1 Rabbit Polyclonal Antibody**

CAT. NO. APA16927

DATA

Western blot analysis of Smurf1 expression in MCF7 (A) whole cell lysates. (Predicted band size: 83; 86 kD; Observed band size: 86 kD)

STORAGE

Store at 4°C short term. For long term storage, store at -20°C, avoiding freeze/thaw cycles.

NOTE

For Research Use Only. Not for diagnostic, therapeutics, prophylactic or in vivo use.