

## DATASHEET

# SNAP23 Rabbit Polyclonal Antibody

CAT. NO. APA16930

### KEY FEATURES

Target	SNAP23	Source / Host	Rabbit
Reactivity	Human, Mouse, Rat	Clonality	Polyclonal
Applications	WB, IHC	Conjugation	Unconjugated
Form / Buffer	Liquid in 0.42% Potassium phosphate, 0.87% Sodium chloride, pH 7.3, 30% glycerol, and 0.01% sodium azide.		Storage at -20°C

### BACKGROUND

Essential component of the high affinity receptor for the general membrane fusion machinery and an important regulator of transport vesicle docking and fusion.

### APPLICATION

To ensure optimal assay performance, AREX recommends conducting reagent titration tailored to each testing system for optimal detection results.

WB	1:500 - 1:2000
IHC	1:50 - 1:200

\*Results are sample-specific. Please refer to your local assay conditions and test parameters for reference.

### PRODUCT OVERVIEW

Description	Rabbit polyclonal antibody to SNAP23
Specificity	Recognizes endogenous levels of SNAP23 protein
Antibody Type	Primary antibody
Immunogen	Recombinant fusion protein of human SNAP23. The exact sequence is proprietary.
Purification	The antibody was purified by immunogen affinity chromatography.
Molecular Weight	Predicted: 17; Observed: 23 kD
Form/Buffer	Liquid in 0.42% Potassium phosphate, 0.87% Sodium chloride, pH 7.3, 30% glycerol, and 0.01% sodium azide.
Alternative Names	Synaptosomal-associated protein 23; SNAP-23; Vesicle-membrane fusion protein SNAP-23
Gene Symbol	SNAP23
Entrez Gene	8773(Human); 20619(Mouse); 64630(Rat)
SwissProt	O00161(Human); O09044(Mouse); O70377(Rat)

\*AREX continuously optimizes our products. Webpage content may not reflect the latest updates. For inquiries, please contact [info@arexbio.com](mailto:info@arexbio.com) or your local distributor.

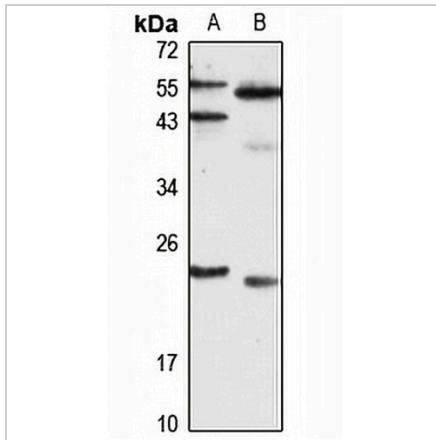
\*Clone Number, Reactivity, Source/Host and Clonality can be found in the product name and Key Features section above.

**DATASHEET**

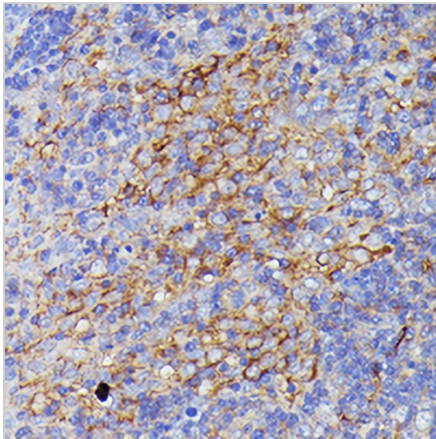
**SNAP23 Rabbit Polyclonal Antibody**

CAT. NO. APA16930

**DATA**



Western blot analysis of SNAP23 expression in HeLa (A), mouse kidney (B) whole cell lysates. (Predicted band size: 17; 23 kD; Observed band size: 23 kD)



Immunohistochemical analysis of SNAP23 staining in rat lymph formalin fixed paraffin embedded tissue section. The section was pre-treated using heat mediated antigen retrieval with sodium citrate buffer (pH 6.0). The section was then incubated with the antibody at room temperature and detected using an HRP conjugated compact polymer system. DAB was used as the chromogen. The section was then counterstained with haematoxylin and mounted with DPX.

**STORAGE**

Store at 4°C short term. For long term storage, store at -20°C, avoiding freeze/thaw cycles.

**NOTE**

For Research Use Only. Not for diagnostic, therapeutics, prophylactic or in vivo use.