

DATASHEET

SNAP43 Rabbit Polyclonal Antibody

CAT. NO. APA16931

KEY FEATURES

Target	SNAP43	Source / Host	Rabbit
Reactivity	Human, Mouse, Rat	Clonality	Polyclonal
Applications	WB	Conjugation	Unconjugated
Form / Buffer	Liquid in 0.42% Potassium phosphate, 0.87% Sodium chloride, pH 7.3, 30% glycerol, and 0.01% sodium azide.		Storage at-20°C

BACKGROUND

Part of the SNAPc complex required for the transcription of both RNA polymerase II and III small-nuclear RNA genes. Binds to the proximal sequence element (PSE), a non-TATA-box basal promoter element common to these 2 types of genes. Recruits TBP and BRF2 to the U6 snRNA TATA box.

APPLICATION

To ensure optimal assay performance, AREX recommends conducting reagent titration tailored to each testing system for optimal detection results.

WB	1:500 - 1:2000
----	----------------

*Results are sample-specific. Please refer to your local assay conditions and test parameters for reference.

PRODUCT OVERVIEW

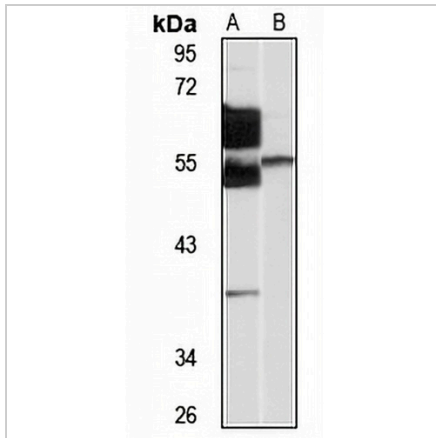
Description	Rabbit polyclonal antibody to SNAP43
Specificity	Recognizes endogenous levels of SNAP43 protein
Antibody Type	Primary antibody
Immunogen	Recombinant fusion protein of human SNAP43. The exact sequence is proprietary.
Purification	The antibody was purified by immunogen affinity chromatography.
Molecular Weight	Predicted: 42 kD; Observed: 50-55 kD
Form/Buffer	Liquid in 0.42% Potassium phosphate, 0.87% Sodium chloride, pH 7.3, 30% glycerol, and 0.01% sodium azide.
Alternative Names	SNAP43; snRNA-activating protein complex subunit 1; SNAPc subunit 1; Proximal sequence element-binding transcription factor subunit gamma; PSE-binding factor subunit gamma; PTF subunit gamma; Small nuclear RNA-activating complex polypeptide 1; snRNA-activating protein complex 43 kDa subunit; SNAPc 43 kDa subunit
Gene Symbol	SNAPC1
Entrez Gene	6617(Human); 75627(Mouse)
SwissProt	Q16533(Human); Q8K0S9(Mouse)

*AREX continuously optimizes our products. Webpage content may not reflect the latest updates. For inquiries, please contact info@arexbio.com or your local distributor.

*Clone Number, Reactivity, Source/Host and Clonality can be found in the product name and Key Features section above.

DATASHEET**SNAP43 Rabbit Polyclonal Antibody**

CAT. NO. APA16931

DATA

Western blot analysis of SNAP43 expression in U87MG (A), rat brain (B) whole cell lysates. (Predicted band size: 42 kD; Observed band size: 50-55 kD)

STORAGE

Store at 4°C short term. For long term storage, store at -20°C, avoiding freeze/thaw cycles.

NOTE

For Research Use Only. Not for diagnostic, therapeutics, prophylactic or in vivo use.