

DATASHEET

EAP30 Rabbit Polyclonal Antibody

CAT. NO. APA16932

KEY FEATURES

Target	EAP30	Source / Host	Rabbit
Reactivity	Human, Mouse, Rat	Clonality	Polyclonal
Applications	WB	Conjugation	Unconjugated
Form / Buffer	Liquid in 0.42% Potassium phosphate, 0.87% Sodium chloride, pH 7.3, 30% glycerol, and 0.01% sodium azide.		Storage at-20°C

BACKGROUND

Component of the endosomal sorting complex required for transport II (ESCRT-II), which is required for multivesicular body (MVB) formation and sorting of endosomal cargo proteins into MVBs, and plays a role in autophagy, which is required for multivesicular body (MVB) formation and sorting of endosomal cargo proteins into MVBs, and plays a role in autophagy. The MVB pathway mediates delivery of transmembrane proteins into the lumen of the lysosome for degradation. The ESCRT-II complex is probably involved in the recruitment of the ESCRT-III complex. The ESCRT-II complex may also play a role in transcription regulation by participating in derepression of transcription by RNA polymerase II, possibly via its interaction with ELL.

APPLICATION

To ensure optimal assay performance, AREX recommends conducting reagent titration tailored to each testing system for optimal detection results.

WB	1:500 - 1:2000
----	----------------

*Results are sample-specific. Please refer to your local assay conditions and test parameters for reference.

PRODUCT OVERVIEW

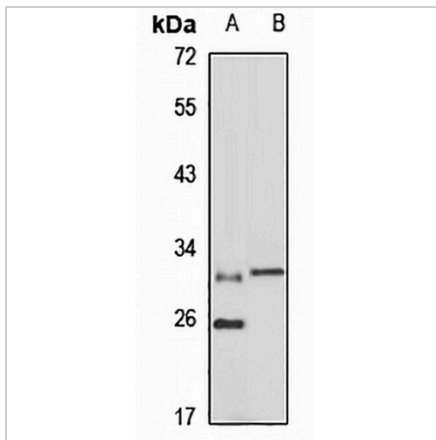
Description	Rabbit polyclonal antibody to EAP30
Specificity	Recognizes endogenous levels of EAP30 protein
Antibody Type	Primary antibody
Immunogen	Recombinant fusion protein of human EAP30. The exact sequence is proprietary.
Purification	The antibody was purified by immunogen affinity chromatography.
Molecular Weight	Predicted: 28 kD; Observed: 30 kD
Form/Buffer	Liquid in 0.42% Potassium phosphate, 0.87% Sodium chloride, pH 7.3, 30% glycerol, and 0.01% sodium azide.
Alternative Names	EAP30; Vacuolar-sorting protein SNF8; ELL-associated protein of 30 kDa; ESCRT-II complex subunit VPS22; hVps22
Gene Symbol	SNF8
Entrez Gene	11267(Human); 27681(Mouse); 287645(Rat)
SwissProt	Q96H20(Human); Q9CZ28(Mouse); Q5RK19(Rat)

*AREX continuously optimizes our products. Webpage content may not reflect the latest updates. For inquiries, please contact info@arexbio.com or your local distributor.

*Clone Number, Reactivity, Source/Host and Clonality can be found in the product name and Key Features section above.

DATASHEET**EAP30 Rabbit Polyclonal Antibody**

CAT. NO. APA16932

DATA

Western blot analysis of EAP30 expression in HEK293T (A), mouse brain (B) whole cell lysates. (Predicted band size: 28 kD; Observed band size: 30 kD)

STORAGE

Store at 4°C short term. For long term storage, store at -20°C, avoiding freeze/thaw cycles.

NOTE

For Research Use Only. Not for diagnostic, therapeutics, prophylactic or in vivo use.