

## DATASHEET

# SNRPB Rabbit Polyclonal Antibody

CAT. NO. APA16936

### KEY FEATURES

Target	SNRPB	Source / Host	Rabbit
Reactivity	Human	Clonality	Polyclonal
Applications	WB	Conjugation	Unconjugated
Form / Buffer	Liquid in 0.42% Potassium phosphate, 0.87% Sodium chloride, pH 7.3, 30% glycerol, and 0.01% sodium azide.		Storage at -20°C

### BACKGROUND

Plays a role in pre-mRNA splicing as a core component of the spliceosomal U1, U2, U4 and U5 small nuclear ribonucleoproteins (snRNPs), the building blocks of the spliceosome, the building blocks of the spliceosome. Component of both the pre-catalytic spliceosome B complex and activated spliceosome C complexes. As a component of the minor spliceosome, involved in the splicing of U12-type introns in pre-mRNAs. As part of the U7 snRNP it is involved in histone pre-mRNA 3'-end processing.

### APPLICATION

To ensure optimal assay performance, AREX recommends conducting reagent titration tailored to each testing system for optimal detection results.

WB	1:500 - 1:1000
----	----------------

\*Results are sample-specific. Please refer to your local assay conditions and test parameters for reference.

### PRODUCT OVERVIEW

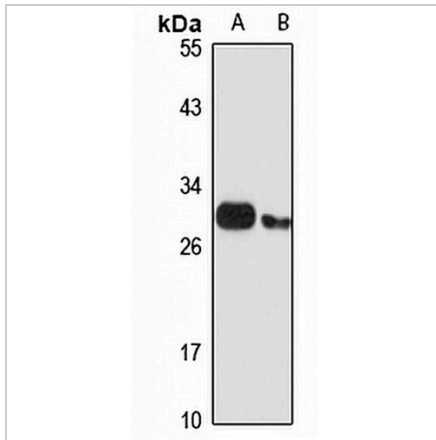
Description	Rabbit polyclonal antibody to SNRPB
Specificity	Recognizes endogenous levels of SNRPB protein
Antibody Type	Primary antibody
Immunogen	KLH-conjugated synthetic peptide of human SNRPB. The exact sequence is proprietary.
Purification	The antibody was purified by immunogen affinity chromatography.
Molecular Weight	Predicted: 23; Observed: 30 kD
Form/Buffer	Liquid in 0.42% Potassium phosphate, 0.87% Sodium chloride, pH 7.3, 30% glycerol, and 0.01% sodium azide.
Alternative Names	COD; SNRPB1; Small nuclear ribonucleoprotein-associated proteins B and B'; snRNP-B; Sm protein B/B'; Sm-B/B'; SmB/B'
Gene Symbol	SNRPB
Entrez Gene	6628(Human); 20638(Mouse)
SwissProt	P14678(Human); P27048(Mouse); P17136(Rat)

\*AREX continuously optimizes our products. Webpage content may not reflect the latest updates. For inquiries, please contact [info@arexbio.com](mailto:info@arexbio.com) or your local distributor.

\*Clone Number, Reactivity, Source/Host and Clonality can be found in the product name and Key Features section above.

**DATASHEET****SNRPB Rabbit Polyclonal Antibody**

CAT. NO. APA16936

**DATA**

Western blot analysis of SNRPB expression in Jurkat (A), mouse brain (B) whole cell lysates. (Predicted band size: 23; 24; 30 kD; Observed band size: 30 kD)

**STORAGE**

Store at 4°C short term. For long term storage, store at -20°C, avoiding freeze/thaw cycles.

**NOTE**

For Research Use Only. Not for diagnostic, therapeutics, prophylactic or in vivo use.