

DATASHEET

SNX25 Rabbit Polyclonal Antibody

CAT. NO. APA16943

KEY FEATURES

Target	SNX25	Source / Host	Rabbit
Reactivity	Human, Mouse	Clonality	Polyclonal
Applications	WB	Conjugation	Unconjugated
Form / Buffer	Liquid in 0.42% Potassium phosphate, 0.87% Sodium chloride, pH 7.3, 30% glycerol, and 0.01% sodium azide.		Storage at -20°C

BACKGROUND

May be involved in several stages of intracellular trafficking.

APPLICATION

To ensure optimal assay performance, AREX recommends conducting reagent titration tailored to each testing system for optimal detection results.

WB	1:500 - 1:2000
----	----------------

*Results are sample-specific. Please refer to your local assay conditions and test parameters for reference.

PRODUCT OVERVIEW

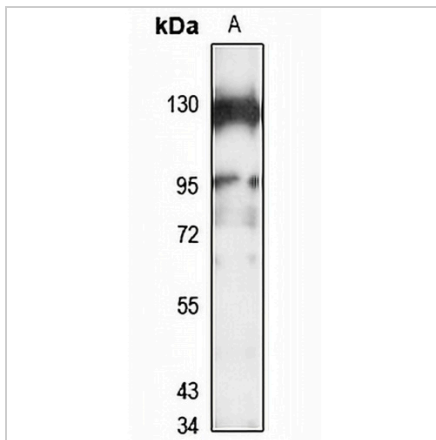
Description	Rabbit polyclonal antibody to SNX25
Specificity	Recognizes endogenous levels of SNX25 protein
Antibody Type	Primary antibody
Immunogen	Recombinant fusion protein of human SNX25. The exact sequence is proprietary.
Purification	The antibody was purified by immunogen affinity chromatography.
Molecular Weight	Predicted: 64; Observed: 98 kD
Form/Buffer	Liquid in 0.42% Potassium phosphate, 0.87% Sodium chloride, pH 7.3, 30% glycerol, and 0.01% sodium azide.
Alternative Names	Sorting nexin-25
Gene Symbol	SNX25
Entrez Gene	83891(Human); 102141(Mouse)
SwissProt	Q9H3E2(Human); Q3ZT31(Mouse)

*AREX continuously optimizes our products. Webpage content may not reflect the latest updates. For inquiries, please contact info@arexbio.com or your local distributor.

*Clone Number, Reactivity, Source/Host and Clonality can be found in the product name and Key Features section above.

DATASHEET**SNX25 Rabbit Polyclonal Antibody**

CAT. NO. APA16943

DATA

Western blot analysis of SNX25 expression in A431 (A) whole cell lysates. (Predicted band size: 64; 97 kD; Observed band size: 98 kD)

STORAGE

Store at 4°C short term. For long term storage, store at -20°C, avoiding freeze/thaw cycles.

NOTE

For Research Use Only. Not for diagnostic, therapeutics, prophylactic or in vivo use.