

DATASHEET

SOCS5 Rabbit Polyclonal Antibody

CAT. NO. APA16948

KEY FEATURES

Target	SOCS5	Source / Host	Rabbit
Reactivity	Human, Mouse	Clonality	Polyclonal
Applications	WB, IHC, IF/ICC	Conjugation	Unconjugated
Form / Buffer	Liquid in 0.42% Potassium phosphate, 0.87% Sodium chloride, pH 7.3, 30% glycerol, and 0.01% sodium azide.		Storage at -20°C

BACKGROUND

SOCS family proteins form part of a classical negative feedback system that regulates cytokine signal transduction. May be a substrate-recognition component of a SCF-like ECS (Elongin BC-CUL2/5-SOCS-box protein) E3 ubiquitin-protein ligase complex which mediates the ubiquitination and subsequent proteasomal degradation of target proteins. Inhibits for instance EGF signaling by mediating the degradation of the EGF receptor/EGFR. Involved in the regulation of T-helper cell differentiation by inhibiting of the IL4 signaling pathway which promotes differentiation into the Th2 phenotype. Can also partially inhibit IL6 and LIF signaling.

APPLICATION

To ensure optimal assay performance, AREX recommends conducting reagent titration tailored to each testing system for optimal detection results.

WB	1:500 - 1:2000
IHC	1:50 - 1:200
IF/ICC	1:50 - 1:200

*Results are sample-specific. Please refer to your local assay conditions and test parameters for reference.

PRODUCT OVERVIEW

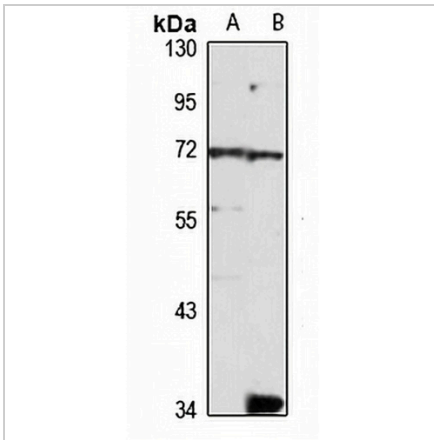
Description	Rabbit polyclonal antibody to SOCS5
Specificity	Recognizes endogenous levels of SOCS5 protein
Antibody Type	Primary antibody
Immunogen	Recombinant fusion protein of human SOCS5. The exact sequence is proprietary.
Purification	The antibody was purified by immunogen affinity chromatography.
Molecular Weight	Predicted: 61 kD; Observed: 70 kD
Form/Buffer	Liquid in 0.42% Potassium phosphate, 0.87% Sodium chloride, pH 7.3, 30% glycerol, and 0.01% sodium azide.
Alternative Names	CIS6; CISH5; CISH6; KIAA0671; Suppressor of cytokine signaling 5; SOCS-5; Cytokine-inducible SH2 protein 6; CIS-6; Cytokine-inducible SH2-containing protein 5
Gene Symbol	SOCS5
Entrez Gene	9655(Human); 56468(Mouse)
SwissProt	O75159(Human); O54928(Mouse)

*AREX continuously optimizes our products. Webpage content may not reflect the latest updates. For inquiries, please contact info@arexbio.com or your local distributor.

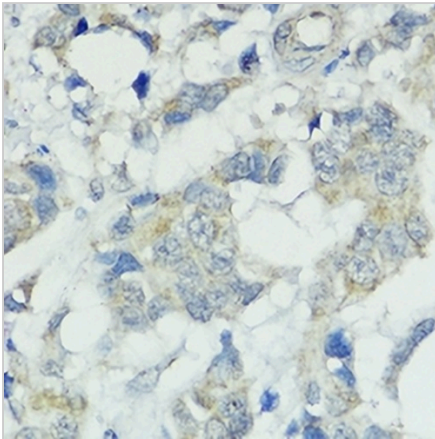
*Clone Number, Reactivity, Source/Host and Clonality can be found in the product name and Key Features section above.

DATASHEET**SOCS5 Rabbit Polyclonal Antibody**

CAT. NO. APA16948

DATA

Western blot analysis of SOCS5 expression in HeLa (A), mouse brain (B) whole cell lysates. (Predicted band size: 61 kD; Observed band size: 70 kD)



Immunohistochemical analysis of SOCS5 staining in human lung cancer formalin fixed paraffin embedded tissue section. The section was pre-treated using heat mediated antigen retrieval with sodium citrate buffer (pH 6.0). The section was then incubated with the antibody at room temperature and detected using an HRP conjugated compact polymer system. DAB was used as the chromogen. The section was then counterstained with haematoxylin and mounted with DPX.

STORAGE

Store at 4°C short term. For long term storage, store at -20°C, avoiding freeze/thaw cycles.

NOTE

For Research Use Only. Not for diagnostic, therapeutics, prophylactic or in vivo use.