

DATASHEET

SorLA Rabbit Polyclonal Antibody

CAT. NO. APA16950

KEY FEATURES

Target	SorLA	Source / Host	Rabbit
Reactivity	Human, Mouse, Rat	Clonality	Polyclonal
Applications	WB	Conjugation	Unconjugated
Form / Buffer	Liquid in 0.42% Potassium phosphate, 0.87% Sodium chloride, pH 7.3, 30% glycerol, and 0.01% sodium azide.		Storage at-20°C

BACKGROUND

Sorting receptor that directs several proteins to their correct location within the cell (Probable). Along with AP-1 complex, involved Golgi apparatus - endosome sorting . Along with AP-1 complex, involved Golgi apparatus - endosome sorting . Sorting receptor for APP, regulating its intracellular trafficking and processing into amyloidogenic-beta peptides. Retains APP in the trans-Golgi network, hence preventing its transit through late endosomes where amyloid beta peptides Abeta40 and Abeta42 are generated . May also sort newly produced amyloid-beta peptides to lysosomes for catabolism . Does not affect APP trafficking from the endoplasmic reticulum to Golgi compartments .

APPLICATION

To ensure optimal assay performance, AREX recommends conducting reagent titration tailored to each testing system for optimal detection results.

WB	1:500 - 1:2000
----	----------------

*Results are sample-specific. Please refer to your local assay conditions and test parameters for reference.

PRODUCT OVERVIEW

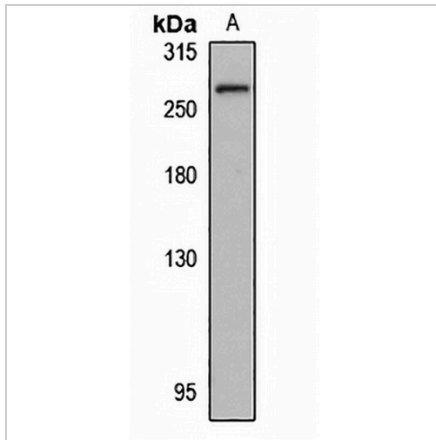
Description	Rabbit polyclonal antibody to SorLA
Specificity	Recognizes endogenous levels of SorLA protein
Antibody Type	Primary antibody
Immunogen	Recombinant fusion protein of human SorLA. The exact sequence is proprietary.
Purification	The antibody was purified by immunogen affinity chromatography.
Molecular Weight	Predicted: 248 kD; Observed: 260 kD
Form/Buffer	Liquid in 0.42% Potassium phosphate, 0.87% Sodium chloride, pH 7.3, 30% glycerol, and 0.01% sodium azide.
Alternative Names	C11orf32; Sortilin-related receptor; Low-density lipoprotein receptor relative with 11 ligand-binding repeats; LDLR relative with 11 ligand-binding repeats; LR1 1; SorLA-1; Sorting protein-related receptor containing LDLR class A repeats; SorLA
Gene Symbol	SORL1
Entrez Gene	6653(Human); 20660(Mouse)
SwissProt	Q92673(Human); O88307(Mouse)

*AREX continuously optimizes our products. Webpage content may not reflect the latest updates. For inquiries, please contact info@arex.bio or your local distributor.

*Clone Number, Reactivity, Source/Host and Clonality can be found in the product name and Key Features section above.

DATASHEET**SorLA Rabbit Polyclonal Antibody**

CAT. NO. APA16950

DATA

Western blot analysis of SorLA expression in HepG2 (A) whole cell lysates. (Predicted band size: 248 kD; Observed band size: 260 kD)

STORAGE

Store at 4°C short term. For long term storage, store at -20°C, avoiding freeze/thaw cycles.

NOTE

For Research Use Only. Not for diagnostic, therapeutics, prophylactic or in vivo use.