

DATASHEET

Sox-13 Rabbit Polyclonal Antibody

CAT. NO. APA16954

KEY FEATURES

Target	Sox-13	Source / Host	Rabbit
Reactivity	Human, Mouse	Clonality	Polyclonal
Applications	WB	Conjugation	Unconjugated
Form / Buffer	Liquid in 0.42% Potassium phosphate, 0.87% Sodium chloride, pH 7.3, 30% glycerol, and 0.01% sodium azide.		Storage at -20°C

BACKGROUND

Transcription factor that binds to DNA at the consensus sequence 5'-AACAAAT-3'. Binds to the proximal promoter region of the myelin protein MPZ gene, and may thereby be involved in the differentiation of oligodendroglia in the developing spinal tube. Binds to the gene promoter of MBP and acts as a transcriptional repressor. Binds to and modifies the activity of TCF7/TCF1, thereby inhibiting transcription and modulates normal gamma-delta T-cell development and differentiation of IL17A expressing gamma-delta T-cells. Regulates expression of BLK in the differentiation of IL17A expressing gamma-delta T-cells. Promotes brown adipocyte differentiation. Inhibitor of WNT signaling.

APPLICATION

To ensure optimal assay performance, AREX recommends conducting reagent titration tailored to each testing system for optimal detection results.

WB	1:500 - 1:2000
----	----------------

*Results are sample-specific. Please refer to your local assay conditions and test parameters for reference.

PRODUCT OVERVIEW

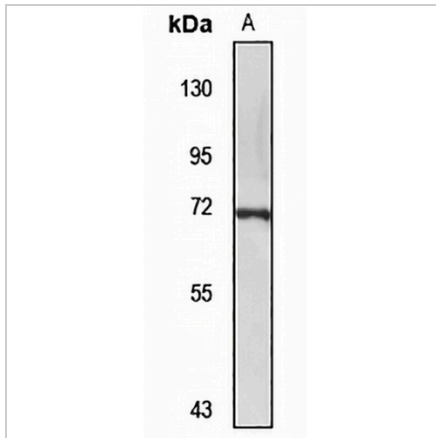
Description	Rabbit polyclonal antibody to Sox-13
Specificity	Recognizes endogenous levels of Sox-13 protein
Antibody Type	Primary antibody
Immunogen	Recombinant fusion protein of human Sox-13. The exact sequence is proprietary.
Purification	The antibody was purified by immunogen affinity chromatography.
Molecular Weight	Predicted: 69 kD; Observed: 69 kD
Form/Buffer	Liquid in 0.42% Potassium phosphate, 0.87% Sodium chloride, pH 7.3, 30% glycerol, and 0.01% sodium azide.
Alternative Names	Transcription factor SOX-13; Islet cell antigen 12; SRY (Sex determining region Y)-box 13; Type 1 diabetes autoantigen ICA12
Gene Symbol	SOX13
Entrez Gene	9580(Human)
SwissProt	Q9UN79(Human)

*AREX continuously optimizes our products. Webpage content may not reflect the latest updates. For inquiries, please contact info@arexbio.com or your local distributor.

*Clone Number, Reactivity, Source/Host and Clonality can be found in the product name and Key Features section above.

DATASHEET**Sox-13 Rabbit Polyclonal Antibody**

CAT. NO. APA16954

DATA

Western blot analysis of Sox-13 expression in HeLa (A) whole cell lysates. (Predicted band size: 69 kD; Observed band size: 69 kD)

STORAGE

Store at 4°C short term. For long term storage, store at -20°C, avoiding freeze/thaw cycles.

NOTE

For Research Use Only. Not for diagnostic, therapeutics, prophylactic or in vivo use.