

**DATASHEET**

**Sp17 Rabbit Polyclonal Antibody**

CAT. NO. APA16956

**KEY FEATURES**

Target	Sp17	Source / Host	Rabbit
Reactivity	Human, Mouse, Rat	Clonality	Polyclonal
Applications	WB	Conjugation	Unconjugated
Form / Buffer	Liquid in 0.42% Potassium phosphate, 0.87% Sodium chloride, pH 7.3, 30% glycerol, and 0.01% sodium azide.		Storage at-20°C

**BACKGROUND**

Sperm surface zona pellucida binding protein. Helps to bind spermatozoa to the zona pellucida with high affinity. Might function in binding zona pellucida and carbohydrates .

**APPLICATION**

To ensure optimal assay performance, AREX recommends conducting reagent titration tailored to each testing system for optimal detection results.

WB	1:500 - 1:2000
----	----------------

\*Results are sample-specific. Please refer to your local assay conditions and test parameters for reference.

**PRODUCT OVERVIEW**

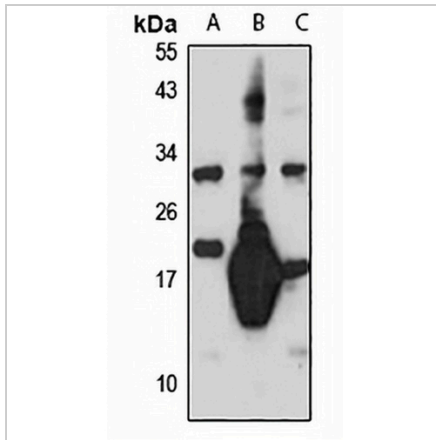
Description	Rabbit polyclonal antibody to Sp17
Specificity	Recognizes endogenous levels of Sp17 protein
Antibody Type	Primary antibody
Immunogen	Recombinant fusion protein of human Sp17. The exact sequence is proprietary.
Purification	The antibody was purified by immunogen affinity chromatography.
Molecular Weight	Predicted: 17 kD; Observed: 17 kD
Form/Buffer	Liquid in 0.42% Potassium phosphate, 0.87% Sodium chloride, pH 7.3, 30% glycerol, and 0.01% sodium azide.
Alternative Names	SP17; Sperm surface protein Sp17; Cancer/testis antigen 22; CT22; Sp17-1; Sperm autoantigenic protein 17; Sperm protein 17
Gene Symbol	SPA17
Entrez Gene	53340(Human); 20686(Mouse)
SwissProt	Q15506(Human); Q62252(Mouse)

\*AREX continuously optimizes our products. Webpage content may not reflect the latest updates. For inquiries, please contact [info@arexbio.com](mailto:info@arexbio.com) or your local distributor.

\*Clone Number, Reactivity, Source/Host and Clonality can be found in the product name and Key Features section above.

**DATASHEET****Sp17 Rabbit Polyclonal Antibody**

CAT. NO. APA16956

**DATA**

Western blot analysis of Sp17 expression in THP1 (A), mouse testis (B), rat lung (C) whole cell lysates. (Predicted band size: 17 kD; Observed band size: 17 kD)

**STORAGE**

Store at 4°C short term. For long term storage, store at -20°C, avoiding freeze/thaw cycles.

**NOTE**

For Research Use Only. Not for diagnostic, therapeutics, prophylactic or in vivo use.