

**DATASHEET**

**SPAG6 Rabbit Polyclonal Antibody**

CAT. NO. APA16957

**KEY FEATURES**

Target	SPAG6	Source / Host	Rabbit
Reactivity	Human	Clonality	Polyclonal
Applications	WB	Conjugation	Unconjugated
Form / Buffer	Liquid in 0.42% Potassium phosphate, 0.87% Sodium chloride, pH 7.3, 30% glycerol, and 0.01% sodium azide.		Storage at -20°C

**BACKGROUND**

Important for structural integrity of the central apparatus in the sperm tail and for flagellar motility.

**APPLICATION**

To ensure optimal assay performance, AREX recommends conducting reagent titration tailored to each testing system for optimal detection results.

WB	1:500 - 1:1000
----	----------------

\*Results are sample-specific. Please refer to your local assay conditions and test parameters for reference.

**PRODUCT OVERVIEW**

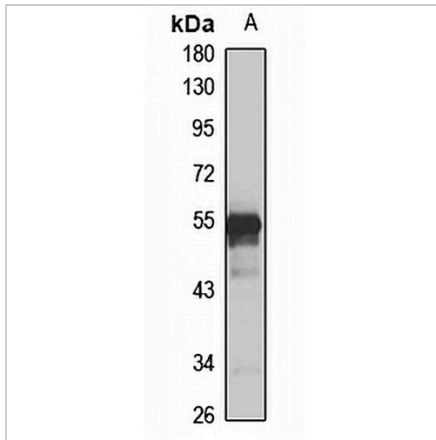
Description	Rabbit polyclonal antibody to SPAG6
Specificity	Recognizes endogenous levels of SPAG6 protein
Antibody Type	Primary antibody
Immunogen	Recombinant fusion protein of human SPAG6. The exact sequence is proprietary.
Purification	The antibody was purified by immunogen affinity chromatography.
Molecular Weight	Predicted: 30; Observed: 55 kD
Form/Buffer	Liquid in 0.42% Potassium phosphate, 0.87% Sodium chloride, pH 7.3, 30% glycerol, and 0.01% sodium azide.
Alternative Names	PF16; Sperm-associated antigen 6; Protein PF16 homolog; Repro-SA-1; Sperm flagellar protein
Gene Symbol	SPAG6
Entrez Gene	9576(Human)
SwissProt	O75602(Human)

\*AREX continuously optimizes our products. Webpage content may not reflect the latest updates. For inquiries, please contact [info@arexbio.com](mailto:info@arexbio.com) or your local distributor.

\*Clone Number, Reactivity, Source/Host and Clonality can be found in the product name and Key Features section above.

**DATASHEET****SPAG6 Rabbit Polyclonal Antibody**

CAT. NO. APA16957

**DATA**

Western blot analysis of SPAG6 expression in Jurkat (A) whole cell lysates. (Predicted band size: 30; 49; 52; 55; 63 kD; Observed band size: 55 kD)

**STORAGE**

Store at 4°C short term. For long term storage, store at -20°C, avoiding freeze/thaw cycles.

**NOTE**

For Research Use Only. Not for diagnostic, therapeutics, prophylactic or in vivo use.