

DATASHEET

Spastin Rabbit Polyclonal Antibody

CAT. NO. APA16958

KEY FEATURES

Target	Spastin	Source / Host	Rabbit
Reactivity	Human, Mouse, Rat	Clonality	Polyclonal
Applications	WB	Conjugation	Unconjugated
Form / Buffer	Liquid in 0.42% Potassium phosphate, 0.87% Sodium chloride, pH 7.3, 30% glycerol, and 0.01% sodium azide.		Storage at -20°C

BACKGROUND

ATP-dependent microtubule severing protein that specifically recognizes and cuts microtubules that are polyglutamylated . Preferentially recognizes and acts on microtubules decorated with short polyglutamate tails: severing activity increases as the number of glutamates per tubulin rises from one to eight, but decreases beyond this glutamylation threshold . Severing activity is not dependent on tubulin acetylation or detyrosination . Microtubule severing promotes reorganization of cellular microtubule arrays and the release of microtubules from the centrosome following nucleation. It is critical for the biogenesis and maintenance of complex microtubule arrays in axons, spindles and cilia.

APPLICATION

To ensure optimal assay performance, AREX recommends conducting reagent titration tailored to each testing system for optimal detection results.

WB	1:500 - 1:2000
----	----------------

*Results are sample-specific. Please refer to your local assay conditions and test parameters for reference.

PRODUCT OVERVIEW

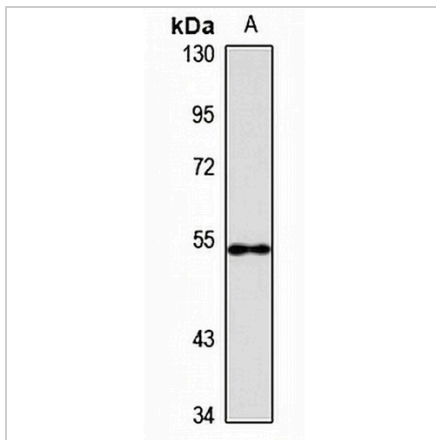
Description	Rabbit polyclonal antibody to Spastin
Specificity	Recognizes endogenous levels of Spastin protein
Antibody Type	Primary antibody
Immunogen	Recombinant fusion protein of human Spastin. The exact sequence is proprietary.
Purification	The antibody was purified by immunogen affinity chromatography.
Molecular Weight	Predicted: 54; Observed: 52 kD
Form/Buffer	Liquid in 0.42% Potassium phosphate, 0.87% Sodium chloride, pH 7.3, 30% glycerol, and 0.01% sodium azide.
Alternative Names	ADPSP; FSP2; KIAA1083; SPG4; Spastin; Spastic paraplegia 4 protein
Gene Symbol	SPAST
Entrez Gene	6683(Human); 50850(Mouse); 362700(Rat)
SwissProt	Q9UBP0(Human); Q9QYY8(Mouse); B2RYN7(Rat)

*AREX continuously optimizes our products. Webpage content may not reflect the latest updates. For inquiries, please contact info@arexbio.com or your local distributor.

*Clone Number, Reactivity, Source/Host and Clonality can be found in the product name and Key Features section above.

DATASHEET**Spastin Rabbit Polyclonal Antibody**

CAT. NO. APA16958

DATA

Western blot analysis of Spastin expression in mouse heart (A) whole cell lysates.
(Predicted band size: 54; 58; 63; 67 kD; Observed band size: 52 kD)

STORAGE

Store at 4°C short term. For long term storage, store at -20°C, avoiding freeze/thaw cycles.

NOTE

For Research Use Only. Not for diagnostic, therapeutics, prophylactic or in vivo use.