

**DATASHEET**

**SPATA7 Rabbit Polyclonal Antibody**

CAT. NO. APA16959

**KEY FEATURES**

Target	SPATA7	Source / Host	Rabbit
Reactivity	Human	Clonality	Polyclonal
Applications	WB	Conjugation	Unconjugated
Form / Buffer	Liquid in 0.42% Potassium phosphate, 0.87% Sodium chloride, pH 7.3, 30% glycerol, and 0.01% sodium azide.		Storage at -20°C

**BACKGROUND**

Involved in the maintenance of both rod and cone photoreceptor cells . It is required for recruitment and proper localization of RPGRIP1 to the photoreceptor connecting cilium (CC), as well as photoreceptor-specific localization of proximal CC proteins at the distal CC . Maintenance of protein localization at the photoreceptor-specific distal CC is essential for normal microtubule stability and to prevent photoreceptor degeneration .

**APPLICATION**

To ensure optimal assay performance, AREX recommends conducting reagent titration tailored to each testing system for optimal detection results.

WB	1:500 - 1:1000
----	----------------

\*Results are sample-specific. Please refer to your local assay conditions and test parameters for reference.

**PRODUCT OVERVIEW**

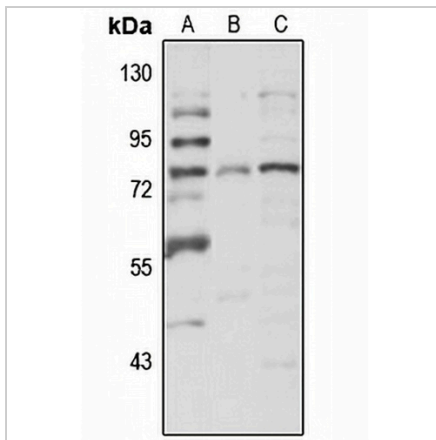
Description	Rabbit polyclonal antibody to SPATA7
Specificity	Recognizes endogenous levels of SPATA7 protein
Antibody Type	Primary antibody
Immunogen	Recombinant fusion protein of human SPATA7. The exact sequence is proprietary.
Purification	The antibody was purified by immunogen affinity chromatography.
Molecular Weight	Predicted: 51; Observed: 75 kD
Form/Buffer	Liquid in 0.42% Potassium phosphate, 0.87% Sodium chloride, pH 7.3, 30% glycerol, and 0.01% sodium azide.
Alternative Names	HSD3; Spermatogenesis-associated protein 7; HSD-3.1; Spermatogenesis-associated protein HSD3
Gene Symbol	SPATA7
Entrez Gene	55812(Human); 104871(Mouse)
SwissProt	Q9P0W8(Human); Q80VP2(Mouse); Q9R0A3(Rat)

\*AREX continuously optimizes our products. Webpage content may not reflect the latest updates. For inquiries, please contact [info@arexbio.com](mailto:info@arexbio.com) or your local distributor.

\*Clone Number, Reactivity, Source/Host and Clonality can be found in the product name and Key Features section above.

**DATASHEET****SPATA7 Rabbit Polyclonal Antibody**

CAT. NO. APA16959

**DATA**

Western blot analysis of SPATA7 expression in U87MG (A), mouse testis (B), rat brain (C) whole cell lysates. (Predicted band size: 51; 64; 67 kD; Observed band size: 75 kD)

**STORAGE**

Store at 4°C short term. For long term storage, store at -20°C, avoiding freeze/thaw cycles.

**NOTE**

For Research Use Only. Not for diagnostic, therapeutics, prophylactic or in vivo use.