

DATASHEET

SPC24 Rabbit Polyclonal Antibody

CAT. NO. APA16960

KEY FEATURES

Target	SPC24	Source / Host	Rabbit
Reactivity	Human, Mouse	Clonality	Polyclonal
Applications	WB	Conjugation	Unconjugated
Form / Buffer	Liquid in 0.42% Potassium phosphate, 0.87% Sodium chloride, pH 7.3, 30% glycerol, and 0.01% sodium azide.		Storage at -20°C

BACKGROUND

Acts as a component of the essential kinetochore-associated NDC80 complex, which is required for chromosome segregation and spindle checkpoint activity . Required for kinetochore integrity and the organization of stable microtubule binding sites in the outer plate of the kinetochore . The NDC80 complex synergistically enhances the affinity of the SKA1 complex for microtubules and may allow the NDC80 complex to track depolymerizing microtubules .

APPLICATION

To ensure optimal assay performance, AREX recommends conducting reagent titration tailored to each testing system for optimal detection results.

WB	1:500 - 1:2000
----	----------------

*Results are sample-specific. Please refer to your local assay conditions and test parameters for reference.

PRODUCT OVERVIEW

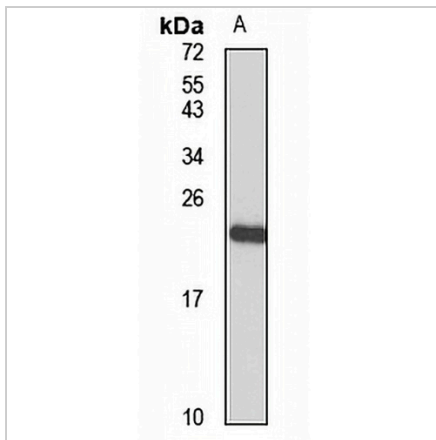
Description	Rabbit polyclonal antibody to SPC24
Specificity	Recognizes endogenous levels of SPC24 protein
Antibody Type	Primary antibody
Immunogen	Recombinant fusion protein of human SPC24. The exact sequence is proprietary.
Purification	The antibody was purified by immunogen affinity chromatography.
Molecular Weight	Predicted: 17; Observed: 22 kD
Form/Buffer	Liquid in 0.42% Potassium phosphate, 0.87% Sodium chloride, pH 7.3, 30% glycerol, and 0.01% sodium azide.
Alternative Names	SPBC24; Kinetochore protein Spc24; hSpc24
Gene Symbol	SPC24
Entrez Gene	147841(Human); 67629(Mouse)
SwissProt	Q8NBT2(Human); Q9D083(Mouse)

*AREX continuously optimizes our products. Webpage content may not reflect the latest updates. For inquiries, please contact info@arexbio.com or your local distributor.

*Clone Number, Reactivity, Source/Host and Clonality can be found in the product name and Key Features section above.

DATASHEET**SPC24 Rabbit Polyclonal Antibody**

CAT. NO. APA16960

DATA

Western blot analysis of SPC24 expression in HeLa (A) whole cell lysates. (Predicted band size: 17; 22 kD; Observed band size: 22 kD)

STORAGE

Store at 4°C short term. For long term storage, store at -20°C, avoiding freeze/thaw cycles.

NOTE

For Research Use Only. Not for diagnostic, therapeutics, prophylactic or in vivo use.