

DATASHEET
Cytospin-A Rabbit Polyclonal Antibody
CAT. NO. APA16961
KEY FEATURES

Target	Cytospin-A	Source / Host	Rabbit
Reactivity	Human, Mouse, Rat	Clonality	Polyclonal
Applications	WB, IHC	Conjugation	Unconjugated
Form / Buffer	Liquid in 0.42% Potassium phosphate, 0.87% Sodium chloride, pH 7.3, 30% glycerol, and 0.01% sodium azide.		Storage at -20°C

BACKGROUND

Involved in cytokinesis and spindle organization. May play a role in actin cytoskeleton organization and microtubule stabilization and hence required for proper cell adhesion and migration.

APPLICATION

To ensure optimal assay performance, AREX recommends conducting reagent titration tailored to each testing system for optimal detection results.

WB	1:500 - 1:2000
IHC	1:50 - 1:200

*Results are sample-specific. Please refer to your local assay conditions and test parameters for reference.

PRODUCT OVERVIEW

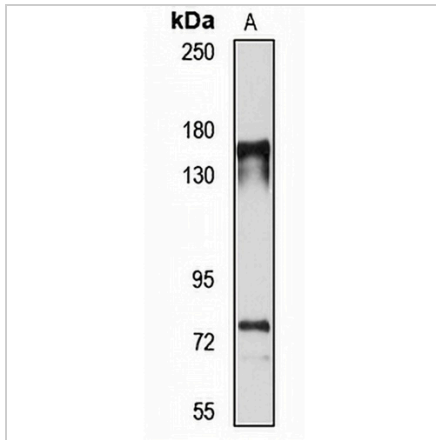
Description	Rabbit polyclonal antibody to Cytospin-A
Specificity	Recognizes endogenous levels of Cytospin-A protein
Antibody Type	Primary antibody
Immunogen	Recombinant fusion protein of human Cytospin-A. The exact sequence is proprietary.
Purification	The antibody was purified by immunogen affinity chromatography.
Molecular Weight	Predicted: 120; Observed: 168 kD
Form/Buffer	Liquid in 0.42% Potassium phosphate, 0.87% Sodium chloride, pH 7.3, 30% glycerol, and 0.01% sodium azide.
Alternative Names	CYTSA; KIAA0376; Cytospin-A; Renal carcinoma antigen NY-REN-22; Sperm antigen with calponin homology and coiled-coil domains 1-like; SPECC1-like protein
Gene Symbol	SPECC1L
Entrez Gene	23384(Human); 74392(Mouse); 361828(Rat)
SwissProt	Q69YQ0(Human); Q2KN98(Mouse); Q2KN99(Rat)

*AREX continuously optimizes our products. Webpage content may not reflect the latest updates. For inquiries, please contact info@arexbio.com or your local distributor.

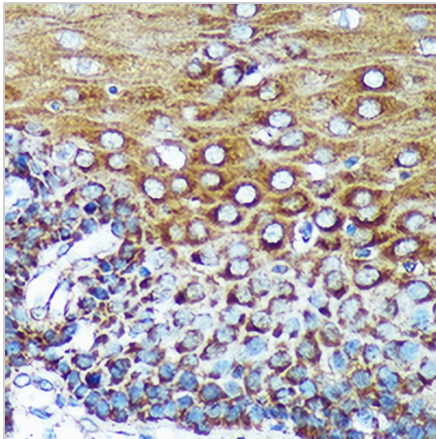
*Clone Number, Reactivity, Source/Host and Clonality can be found in the product name and Key Features section above.

DATASHEET**Cytospin-A Rabbit Polyclonal Antibody**

CAT. NO. APA16961

DATA

Western blot analysis of Cytospin-A expression in HeLa (A) whole cell lysates. (Predicted band size: 120; 124 kD; Observed band size: 168 kD)



Immunohistochemical analysis of Cytospin-A staining in human esophageal formalin fixed paraffin embedded tissue section. The section was pre-treated using heat mediated antigen retrieval with sodium citrate buffer (pH 6.0). The section was then incubated with the antibody at room temperature and detected using an HRP conjugated compact polymer system. DAB was used as the chromogen. The section was then counterstained with haematoxylin and mounted with DPX.

STORAGE

Store at 4°C short term. For long term storage, store at -20°C, avoiding freeze/thaw cycles.

NOTE

For Research Use Only. Not for diagnostic, therapeutics, prophylactic or in vivo use.