

DATASHEET

SPEM1 Rabbit Polyclonal Antibody

CAT. NO. APA16962

KEY FEATURES

Target	SPEM1	Source / Host	Rabbit
Reactivity	Human	Clonality	Polyclonal
Applications	WB	Conjugation	Unconjugated
Form / Buffer	Liquid in 0.42% Potassium phosphate, 0.87% Sodium chloride, pH 7.3, 30% glycerol, and 0.01% sodium azide.		Storage at -20°C

BACKGROUND

Required for proper cytoplasm removal during spermatogenesis.

APPLICATION

To ensure optimal assay performance, AREX recommends conducting reagent titration tailored to each testing system for optimal detection results.

WB	1:500 - 1:2000
----	----------------

*Results are sample-specific. Please refer to your local assay conditions and test parameters for reference.

PRODUCT OVERVIEW

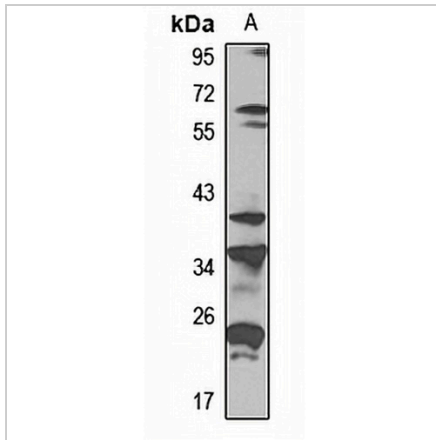
Description	Rabbit polyclonal antibody to SPEM1
Specificity	Recognizes endogenous levels of SPEM1 protein
Antibody Type	Primary antibody
Immunogen	Recombinant fusion protein of human SPEM1. The exact sequence is proprietary.
Purification	The antibody was purified by immunogen affinity chromatography.
Molecular Weight	Predicted: 34 kD; Observed: 36 kD
Form/Buffer	Liquid in 0.42% Potassium phosphate, 0.87% Sodium chloride, pH 7.3, 30% glycerol, and 0.01% sodium azide.
Alternative Names	C17orf83; Spermatid maturation protein 1
Gene Symbol	SPEM1
Entrez Gene	374768(Human)
SwissProt	Q8N4L4(Human)

*AREX continuously optimizes our products. Webpage content may not reflect the latest updates. For inquiries, please contact info@arexbio.com or your local distributor.

*Clone Number, Reactivity, Source/Host and Clonality can be found in the product name and Key Features section above.

DATASHEET**SPEM1 Rabbit Polyclonal Antibody**

CAT. NO. APA16962

DATA

Western blot analysis of SPEM1 expression in PC3 (A) whole cell lysates. (Predicted band size: 34 kD; Observed band size: 36 kD)

STORAGE

Store at 4°C short term. For long term storage, store at -20°C, avoiding freeze/thaw cycles.

NOTE

For Research Use Only. Not for diagnostic, therapeutics, prophylactic or in vivo use.