

DATASHEET

Spir-2 Rabbit Polyclonal Antibody

CAT. NO. APA16966

KEY FEATURES

Target	Spir-2	Source / Host	Rabbit
Reactivity	Human, Mouse, Rat	Clonality	Polyclonal
Applications	WB	Conjugation	Unconjugated
Form / Buffer	Liquid in 0.42% Potassium phosphate, 0.87% Sodium chloride, pH 7.3, 30% glycerol, and 0.01% sodium azide.		Storage at-20°C

BACKGROUND

Acts as an actin nucleation factor, remains associated with the slow-growing pointed end of the new filament . Involved in intracellular vesicle transport along actin fibers, providing a novel link between actin cytoskeleton dynamics and intracellular transport . Required for asymmetric spindle positioning and asymmetric cell division during meiosis . Required for normal formation of the cleavage furrow and for polar body extrusion during female germ cell meiosis . Also acts in the nucleus: together with SPIRE1 and SPIRE2, promotes assembly of nuclear actin filaments in response to DNA damage in order to facilitate movement of chromatin and repair factors after DNA damage .

APPLICATION

To ensure optimal assay performance, AREX recommends conducting reagent titration tailored to each testing system for optimal detection results.

WB	1:500 - 1:2000
----	----------------

*Results are sample-specific. Please refer to your local assay conditions and test parameters for reference.

PRODUCT OVERVIEW

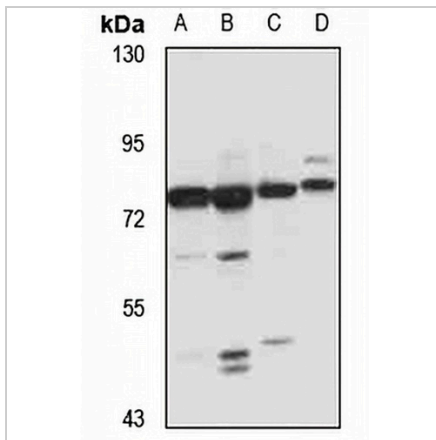
Description	Rabbit polyclonal antibody to Spir-2
Specificity	Recognizes endogenous levels of Spir-2 protein
Antibody Type	Primary antibody
Immunogen	Recombinant fusion protein of human Spir-2. The exact sequence is proprietary.
Purification	The antibody was purified by immunogen affinity chromatography.
Molecular Weight	Predicted: 65; Observed: 79 kD
Form/Buffer	Liquid in 0.42% Potassium phosphate, 0.87% Sodium chloride, pH 7.3, 30% glycerol, and 0.01% sodium azide.
Alternative Names	KIAA1832; SPIR2; Protein spire homolog 2; Spir-2
Gene Symbol	SPIRE2
Entrez Gene	84501(Human); 234857(Mouse)
SwissProt	Q8WWL2(Human); Q8K1S6(Mouse)

*AREX continuously optimizes our products. Webpage content may not reflect the latest updates. For inquiries, please contact info@arexbio.com or your local distributor.

*Clone Number, Reactivity, Source/Host and Clonality can be found in the product name and Key Features section above.

DATASHEET**Spir-2 Rabbit Polyclonal Antibody**

CAT. NO. APA16966

DATA

Western blot analysis of Spir-2 expression in A431 (A), HeLa (B), mouse testis (C), rat brain (D) whole cell lysates. (Predicted band size: 65; 74; 79 kD; Observed band size: 79 kD)

STORAGE

Store at 4°C short term. For long term storage, store at -20°C, avoiding freeze/thaw cycles.

NOTE

For Research Use Only. Not for diagnostic, therapeutics, prophylactic or in vivo use.