

DATASHEET

SPPL2a Rabbit Polyclonal Antibody

CAT. NO. APA16968

KEY FEATURES

Target	SPPL2a	Source / Host	Rabbit
Reactivity	Human, Mouse, Rat	Clonality	Polyclonal
Applications	WB, IHC	Conjugation	Unconjugated
Form / Buffer	Liquid in 0.42% Potassium phosphate, 0.87% Sodium chloride, pH 7.3, 30% glycerol, and 0.01% sodium azide.		Storage at -20°C

BACKGROUND

Intramembrane-cleaving aspartic protease (I-CLiP) that cleaves type II membrane signal peptides in the hydrophobic plane of the membrane. Functions in FASLG, ITM2B and TNF processing that cleaves type II membrane signal peptides in the hydrophobic plane of the membrane. Functions in FASLG, ITM2B and TNF processing . Catalyzes the intramembrane cleavage of the anchored fragment of shed TNF (TNF), which promotes the release of the intracellular domain (ICD) for signaling to the nucleus . Also responsible for the intramembrane cleavage of Fas antigen ligand FASLG, which promotes the release of the intracellular FasL domain (FasL ICD) . Essential for degradation of the invariant chain CD74 that plays a central role in the function of antigen-presenting cells in the immune system .

APPLICATION

To ensure optimal assay performance, AREX recommends conducting reagent titration tailored to each testing system for optimal detection results.

WB	1:500 - 1:2000
IHC	1:50 - 1:200

*Results are sample-specific. Please refer to your local assay conditions and test parameters for reference.

PRODUCT OVERVIEW

Description	Rabbit polyclonal antibody to SPPL2a
Specificity	Recognizes endogenous levels of SPPL2a protein
Antibody Type	Primary antibody
Immunogen	Recombinant fusion protein of human SPPL2a. The exact sequence is proprietary.
Purification	The antibody was purified by immunogen affinity chromatography.
Molecular Weight	Predicted: 58 kD; Observed: 57 kD
Form/Buffer	Liquid in 0.42% Potassium phosphate, 0.87% Sodium chloride, pH 7.3, 30% glycerol, and 0.01% sodium azide.
Alternative Names	IMP3; PSL2; Signal peptide peptidase-like 2A; SPP-like 2A; SPPL2a; Intramembrane protease 3; IMP-3; Presenilin-like protein 2
Gene Symbol	SPPL2A
Entrez Gene	84888(Human); 66552(Mouse)
SwissProt	Q8TCT8(Human); Q9JJF9(Mouse)

*AREX continuously optimizes our products. Webpage content may not reflect the latest updates. For inquiries, please contact info@arexbio.com or your local distributor.

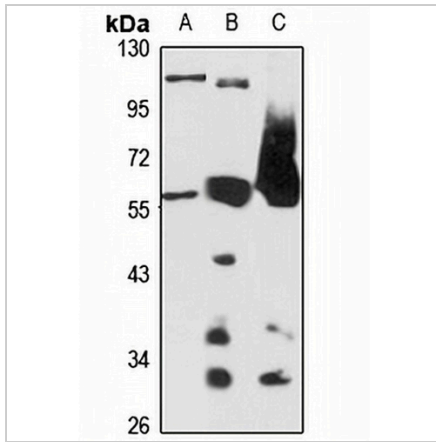
*Clone Number, Reactivity, Source/Host and Clonality can be found in the product name and Key Features section above.

DATASHEET

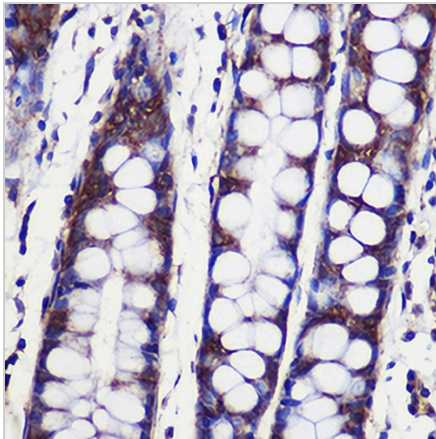
SPPL2a Rabbit Polyclonal Antibody

CAT. NO. APA16968

DATA



Western blot analysis of SPPL2a expression in Jurkat (A), mouse brain (B), rat small intestine (C) whole cell lysates. (Predicted band size: 58 kD; Observed band size: 57 kD)



Immunohistochemical analysis of SPPL2a staining in human colon formalin fixed paraffin embedded tissue section. The section was pre-treated using heat mediated antigen retrieval with sodium citrate buffer (pH 6.0). The section was then incubated with the antibody at room temperature and detected using an HRP conjugated compact polymer system. DAB was used as the chromogen. The section was then counterstained with haematoxylin and mounted with DPX.

STORAGE

Store at 4°C short term. For long term storage, store at -20°C, avoiding freeze/thaw cycles.

NOTE

For Research Use Only. Not for diagnostic, therapeutics, prophylactic or in vivo use.