

DATASHEET

SPRY4 Rabbit Polyclonal Antibody

CAT. NO. APA16972

KEY FEATURES

| | | | |
|---------------|---|---------------|---------------------|
| Target | SPRY4 | Source / Host | Rabbit |
| Reactivity | Human, Mouse, Rat | Clonality | Polyclonal |
| Applications | WB | Conjugation | Unconjugated |
| Form / Buffer | Liquid in 0.42% Potassium phosphate, 0.87% Sodium chloride, pH 7.3, 30% glycerol, and 0.01% sodium azide. | | Storage at -20°C |

BACKGROUND

Suppresses the insulin receptor and EGFR-transduced MAPK signaling pathway, but does not inhibit MAPK activation by a constitutively active mutant Ras . Probably impairs the formation of GTP-Ras . Inhibits Ras-independent, but not Ras-dependent, activation of RAF1 . Represses integrin-mediated cell spreading via inhibition of TESK1-mediated phosphorylation of cofilin .

APPLICATION

To ensure optimal assay performance, AREX recommends conducting reagent titration tailored to each testing system for optimal detection results.

| | |
|----|----------------|
| WB | 1:500 - 1:2000 |
|----|----------------|

*Results are sample-specific. Please refer to your local assay conditions and test parameters for reference.

PRODUCT OVERVIEW

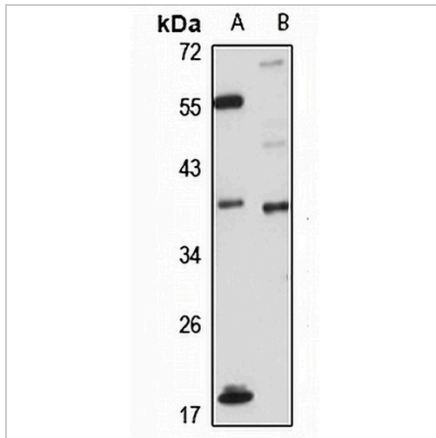
| | |
|-------------------|---|
| Description | Rabbit polyclonal antibody to SPRY4 |
| Specificity | Recognizes endogenous levels of SPRY4 protein |
| Antibody Type | Primary antibody |
| Immunogen | Recombinant fusion protein of human SPRY4. The exact sequence is proprietary. |
| Purification | The antibody was purified by immunogen affinity chromatography. |
| Molecular Weight | Predicted: 11; Observed: 37 kD |
| Form/Buffer | Liquid in 0.42% Potassium phosphate, 0.87% Sodium chloride, pH 7.3, 30% glycerol, and 0.01% sodium azide. |
| Alternative Names | Protein sprouty homolog 4; Spry-4 |
| Gene Symbol | SPRY4 |
| Entrez Gene | 81848(Human); 24066(Mouse) |
| SwissProt | Q9C004(Human); Q9WTP2(Mouse) |

*AREX continuously optimizes our products. Webpage content may not reflect the latest updates. For inquiries, please contact info@arexbio.com or your local distributor.

*Clone Number, Reactivity, Source/Host and Clonality can be found in the product name and Key Features section above.

DATASHEET**SPRY4 Rabbit Polyclonal Antibody**

CAT. NO. APA16972

DATA**STORAGE**

Store at 4°C short term. For long term storage, store at -20°C, avoiding freeze/thaw cycles.

NOTE

For Research Use Only. Not for diagnostic, therapeutics, prophylactic or in vivo use.