

DATASHEET

SRBD1 Rabbit Polyclonal Antibody

CAT. NO. APA16973

KEY FEATURES

Target	SRBD1	Source / Host	Rabbit
Reactivity	Human, Mouse, Rat	Clonality	Polyclonal
Applications	WB	Conjugation	Unconjugated
Form / Buffer	Liquid in 0.42% Potassium phosphate, 0.87% Sodium chloride, pH 7.3, 30% glycerol, and 0.01% sodium azide.		Storage at -20°C

BACKGROUND

DNA- and histone-binding protein that localizes to the central axes of mitotic chromosomes . Promotes chromosome segregation by facilitating TOP2A recruitment to mitotic chromosomes, thereby preventing anaphase failure . During prophase, safeguards the decatenation process to avoid the formation of difficult-to-resolve DNA structures, preventing chromosome missegregation . Also contributes to the regulation of nucleus pulposus cell senescence .

APPLICATION

To ensure optimal assay performance, AREX recommends conducting reagent titration tailored to each testing system for optimal detection results.

WB	1:500 - 1:2000
----	----------------

*Results are sample-specific. Please refer to your local assay conditions and test parameters for reference.

PRODUCT OVERVIEW

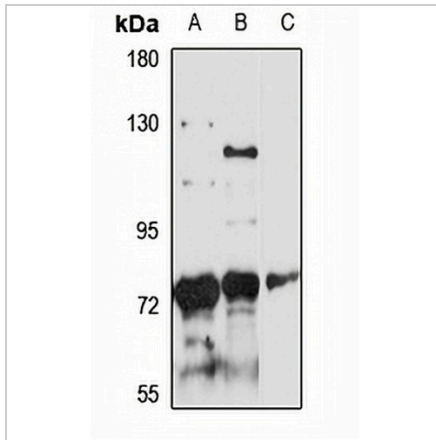
Description	Rabbit polyclonal antibody to SRBD1
Specificity	Recognizes endogenous levels of SRBD1 protein
Antibody Type	Primary antibody
Immunogen	Recombinant fusion protein of human SRBD1. The exact sequence is proprietary.
Purification	The antibody was purified by immunogen affinity chromatography.
Molecular Weight	Predicted: 69; Observed: 80 kD
Form/Buffer	Liquid in 0.42% Potassium phosphate, 0.87% Sodium chloride, pH 7.3, 30% glycerol, and 0.01% sodium azide.
Alternative Names	S1 RNA-binding domain-containing protein 1
Gene Symbol	SRBD1
Entrez Gene	55133(Human)
SwissProt	Q8N5C6(Human); Q497V5(Mouse)

*AREX continuously optimizes our products. Webpage content may not reflect the latest updates. For inquiries, please contact info@arexbio.com or your local distributor.

*Clone Number, Reactivity, Source/Host and Clonality can be found in the product name and Key Features section above.

DATASHEET**SRBD1 Rabbit Polyclonal Antibody**

CAT. NO. APA16973

DATA

Western blot analysis of SRBD1 expression in A549 (A), mouse testis (B), rat brain (C) whole cell lysates. (Predicted band size: 69; 111 kD; Observed band size: 80 kD)

STORAGE

Store at 4°C short term. For long term storage, store at -20°C, avoiding freeze/thaw cycles.

NOTE

For Research Use Only. Not for diagnostic, therapeutics, prophylactic or in vivo use.