

## DATASHEET

# SRCRB4D Rabbit Polyclonal Antibody

CAT. NO. APA16974

### KEY FEATURES

|               |   |               |                     |
|---------------|---|---------------|---------------------|
| Target        | SRCRB4D   | Source / Host | Rabbit              |
| Reactivity    | Human, Mouse, Rat   | Clonality     | Polyclonal          |
| Applications  | WB  | Conjugation   | Unconjugated        |
| Form / Buffer | Liquid in 0.42% Potassium phosphate, 0.87% Sodium chloride, pH 7.3, 30% glycerol, and 0.01% sodium azide. |               | Storage<br>at -20°C |

### BACKGROUND

The scavenger receptor cysteine-rich (SRCR) superfamily is an ancient and highly conserved group of cell surface and/or secreted proteins, some of which are involved in the development of the immune system and the regulation of both innate and adaptive immune responses. Group B SRCR domains usually contain 8 regularly spaced cysteines that give rise to a well-defined intradomain disulfide-bond pattern.

### APPLICATION

To ensure optimal assay performance, AREX recommends conducting reagent titration tailored to each testing system for optimal detection results.

|    |                |
|----|----------------|
| WB | 1:500 - 1:2000 |
|----|----------------|

\*Results are sample-specific. Please refer to your local assay conditions and test parameters for reference.

### PRODUCT OVERVIEW

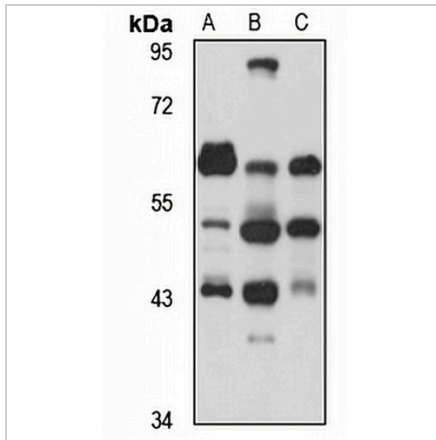
|                   |   |
|-------------------|---|
| Description       | Rabbit polyclonal antibody to SRCRB4D   |
| Specificity       | Recognizes endogenous levels of SRCRB4D protein   |
| Antibody Type     | Primary antibody  |
| Immunogen         | Recombinant fusion protein of human SRCRB4D. The exact sequence is proprietary.                           |
| Purification      | The antibody was purified by immunogen affinity chromatography.   |
| Molecular Weight  | Predicted: 29; Observed: 61 kD  |
| Form/Buffer       | Liquid in 0.42% Potassium phosphate, 0.87% Sodium chloride, pH 7.3, 30% glycerol, and 0.01% sodium azide. |
| Alternative Names | Scavenger receptor cysteine-rich domain-containing group B protein; S4-SRCRB                              |
| Gene Symbol       | SRCRB4D   |
| Entrez Gene       | 136853(Human); 109267(Mouse)  |
| SwissProt         | Q8WTU2(Human); A1L0T3(Mouse)  |

\*AREX continuously optimizes our products. Webpage content may not reflect the latest updates. For inquiries, please contact [info@arexbio.com](mailto:info@arexbio.com) or your local distributor.

\*Clone Number, Reactivity, Source/Host and Clonality can be found in the product name and Key Features section above.

**DATASHEET****SRCRB4D Rabbit Polyclonal Antibody**

CAT. NO. APA16974

**DATA**

Western blot analysis of SRCRB4D expression in HepG2 (A), mouse brain (B), rat liver (C) whole cell lysates. (Predicted band size: 29; 60 kD; Observed band size: 61 kD)

**STORAGE**

Store at 4°C short term. For long term storage, store at -20°C, avoiding freeze/thaw cycles.

**NOTE**

For Research Use Only. Not for diagnostic, therapeutics, prophylactic or in vivo use.