

DATASHEET

SRRP86 Rabbit Polyclonal Antibody

CAT. NO. APA16976

KEY FEATURES

Target	SRRP86	Source / Host	Rabbit
Reactivity	Human, Mouse, Rat	Clonality	Polyclonal
Applications	WB	Conjugation	Unconjugated
Form / Buffer	Liquid in 0.42% Potassium phosphate, 0.87% Sodium chloride, pH 7.3, 30% glycerol, and 0.01% sodium azide.		Storage at -20°C

BACKGROUND

Participates in the regulation of alternative splicing by modulating the activity of other splice factors. Inhibits the splicing activity of SFRS1, SFRS2 and SFRS6. Augments the splicing activity of SFRS3.

APPLICATION

To ensure optimal assay performance, AREX recommends conducting reagent titration tailored to each testing system for optimal detection results.

WB	1:500 - 1:2000
----	----------------

*Results are sample-specific. Please refer to your local assay conditions and test parameters for reference.

PRODUCT OVERVIEW

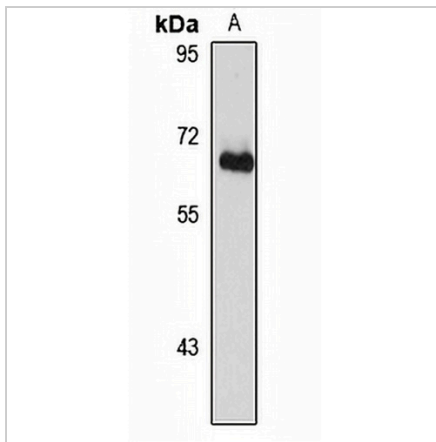
Description	Rabbit polyclonal antibody to SRRP86
Specificity	Recognizes endogenous levels of SRRP86 protein
Antibody Type	Primary antibody
Immunogen	Recombinant fusion protein of human SRRP86. The exact sequence is proprietary.
Purification	The antibody was purified by immunogen affinity chromatography.
Molecular Weight	Predicted: 59; Observed: 59 kD
Form/Buffer	Liquid in 0.42% Potassium phosphate, 0.87% Sodium chloride, pH 7.3, 30% glycerol, and 0.01% sodium azide.
Alternative Names	SFRS12; SRRP86; Splicing regulatory glutamine/lysine-rich protein 1; Serine/arginine-rich-splicing regulatory protein 86; SRrp86; Splicing factor arginine/serine-rich 12; Splicing regulatory protein 508; SRrp508
Gene Symbol	SREK1
Entrez Gene	140890(Human); 218543(Mouse); 56763(Rat)
SwissProt	Q8WXA9(Human); Q8BZX4(Mouse); Q9JKL7(Rat)

*AREX continuously optimizes our products. Webpage content may not reflect the latest updates. For inquiries, please contact info@arexbio.com or your local distributor.

*Clone Number, Reactivity, Source/Host and Clonality can be found in the product name and Key Features section above.

DATASHEET**SRRP86 Rabbit Polyclonal Antibody**

CAT. NO. APA16976

DATA

Western blot analysis of SRRP86 expression in HeLa (A) whole cell lysates. (Predicted band size: 59; 71 kD; Observed band size: 59 kD)

STORAGE

Store at 4°C short term. For long term storage, store at -20°C, avoiding freeze/thaw cycles.

NOTE

For Research Use Only. Not for diagnostic, therapeutics, prophylactic or in vivo use.