

DATASHEET

SRRM1 Rabbit Polyclonal Antibody

CAT. NO. APA16980

KEY FEATURES

| | | | |
|---------------|---|---------------|--------------------|
| Target | SRRM1 | Source / Host | Rabbit |
| Reactivity | Human, Mouse | Clonality | Polyclonal |
| Applications | WB | Conjugation | Unconjugated |
| Form / Buffer | Liquid in 0.42% Potassium phosphate, 0.87% Sodium chloride, pH 7.3, 30% glycerol, and 0.01% sodium azide. | | Storage at-20°C |

BACKGROUND

Part of pre- and post-splicing multiprotein mRNP complexes. As a component of the minor spliceosome, involved in the splicing of U12-type introns in pre-mRNAs (Probable). Involved in numerous pre-mRNA processing events. Promotes constitutive and exonic splicing enhancer (ESE)-dependent splicing activation by bridging together sequence-specific (SR family proteins, SFRS4, SFRS5 and TRA2B/SFRS10) and basal snRNP (SNRP70 and SNRPA1) factors of the spliceosome. Stimulates mRNA 3'-end cleavage independently of the formation of an exon junction complex. Binds both pre-mRNA and spliced mRNA 20-25 nt upstream of exon-exon junctions. Binds RNA and DNA with low sequence specificity and has similar preference for either double- or single-stranded nucleic acid substrates.

APPLICATION

To ensure optimal assay performance, AREX recommends conducting reagent titration tailored to each testing system for optimal detection results.

| | |
|----|----------------|
| WB | 1:500 - 1:2000 |
|----|----------------|

*Results are sample-specific. Please refer to your local assay conditions and test parameters for reference.

PRODUCT OVERVIEW

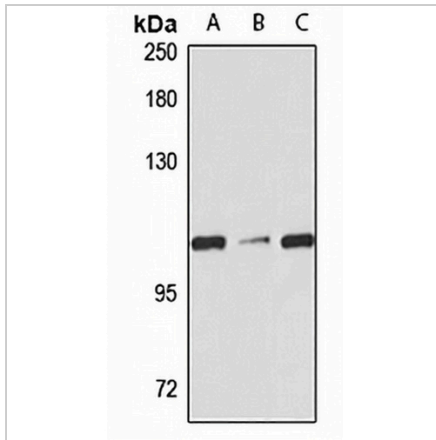
| | |
|-------------------|---|
| Description | Rabbit polyclonal antibody to SRRM1 |
| Specificity | Recognizes endogenous levels of SRRM1 protein |
| Antibody Type | Primary antibody |
| Immunogen | Recombinant fusion protein of human SRRM1. The exact sequence is proprietary. |
| Purification | The antibody was purified by immunogen affinity chromatography. |
| Molecular Weight | Predicted: 102 kD; Observed: 102 kD |
| Form/Buffer | Liquid in 0.42% Potassium phosphate, 0.87% Sodium chloride, pH 7.3, 30% glycerol, and 0.01% sodium azide. |
| Alternative Names | SRM160; Serine/arginine repetitive matrix protein 1; SR-related nuclear matrix protein of 160 kDa; SRm160; Ser/Arg-related nuclear matrix protein |
| Gene Symbol | SRRM1 |
| Entrez Gene | 10250(Human); 51796(Mouse) |
| SwissProt | Q8IYB3(Human); Q52KI8(Mouse) |

*AREX continuously optimizes our products. Webpage content may not reflect the latest updates. For inquiries, please contact info@arexbio.com or your local distributor.

*Clone Number, Reactivity, Source/Host and Clonality can be found in the product name and Key Features section above.

DATASHEET**SRRM1 Rabbit Polyclonal Antibody**

CAT. NO. APA16980

DATA

Western blot analysis of SRRM1 expression in HeLa (A), Jurkat (B), mouse liver (C) whole cell lysates. (Predicted band size: 102 kD; Observed band size: 102 kD)

STORAGE

Store at 4°C short term. For long term storage, store at -20°C, avoiding freeze/thaw cycles.

NOTE

For Research Use Only. Not for diagnostic, therapeutics, prophylactic or in vivo use.