

DATASHEET

Sarcospan Rabbit Polyclonal Antibody

CAT. NO. APA16984

KEY FEATURES

Target	Sarcospan	Source / Host	Rabbit
Reactivity	Human, Mouse, Rat	Clonality	Polyclonal
Applications	WB	Conjugation	Unconjugated
Form / Buffer	Liquid in 0.42% Potassium phosphate, 0.87% Sodium chloride, pH 7.3, 30% glycerol, and 0.01% sodium azide.		Storage at -20°C

BACKGROUND

Component of the dystrophin-glycoprotein complex (DGC), a complex that spans the muscle plasma membrane and forms a link between the F-actin cytoskeleton and the extracellular matrix. Preferentially associates with the sarcoglycan subcomplex of the DGC.

APPLICATION

To ensure optimal assay performance, AREX recommends conducting reagent titration tailored to each testing system for optimal detection results.

WB	1:500 - 1:2000
----	----------------

*Results are sample-specific. Please refer to your local assay conditions and test parameters for reference.

PRODUCT OVERVIEW

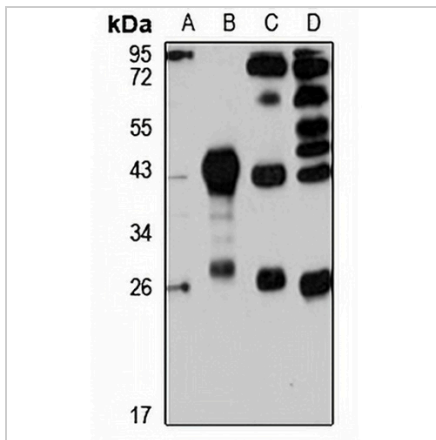
Description	Rabbit polyclonal antibody to Sarcospan
Specificity	Recognizes endogenous levels of Sarcospan protein
Antibody Type	Primary antibody
Immunogen	Recombinant fusion protein of human Sarcospan. The exact sequence is proprietary.
Purification	The antibody was purified by immunogen affinity chromatography.
Molecular Weight	Predicted: 14; Observed: 27 kD
Form/Buffer	Liquid in 0.42% Potassium phosphate, 0.87% Sodium chloride, pH 7.3, 30% glycerol, and 0.01% sodium azide.
Alternative Names	KRAG; Sarcospan; K-ras oncogene-associated protein; Kirsten-ras-associated protein
Gene Symbol	SSPN
Entrez Gene	8082(Human); 16651(Mouse)
SwissProt	Q14714(Human); Q62147(Mouse)

*AREX continuously optimizes our products. Webpage content may not reflect the latest updates. For inquiries, please contact info@arexbio.com or your local distributor.

*Clone Number, Reactivity, Source/Host and Clonality can be found in the product name and Key Features section above.

DATASHEET**Sarcospan Rabbit Polyclonal Antibody**

CAT. NO. APA16984

DATA

Western blot analysis of Sarcospan expression in NIH3T3 (A), mouse skeletal muscle (B), rat heart (C), rat brain (D) whole cell lysates. (Predicted band size: 14; 15; 26 kD; Observed band size: 27 kD)

STORAGE

Store at 4°C short term. For long term storage, store at -20°C, avoiding freeze/thaw cycles.

NOTE

For Research Use Only. Not for diagnostic, therapeutics, prophylactic or in vivo use.