

DATASHEET

TRAP-alpha Rabbit Polyclonal Antibody

CAT. NO. APA16985

KEY FEATURES

Target	TRAP-alpha	Source / Host	Rabbit
Reactivity	Human, Mouse	Clonality	Polyclonal
Applications	WB	Conjugation	Unconjugated
Form / Buffer	Liquid in 0.42% Potassium phosphate, 0.87% Sodium chloride, pH 7.3, 30% glycerol, and 0.01% sodium azide.		Storage at-20°C

BACKGROUND

TRAP proteins are part of a complex whose function is to bind calcium to the ER membrane and thereby regulate the retention of ER resident proteins. May be involved in the recycling of the translocation apparatus after completion of the translocation process or may function as a membrane-bound chaperone facilitating folding of translocated proteins.

APPLICATION

To ensure optimal assay performance, AREX recommends conducting reagent titration tailored to each testing system for optimal detection results.

WB	1:500 - 1:2000
----	----------------

*Results are sample-specific. Please refer to your local assay conditions and test parameters for reference.

PRODUCT OVERVIEW

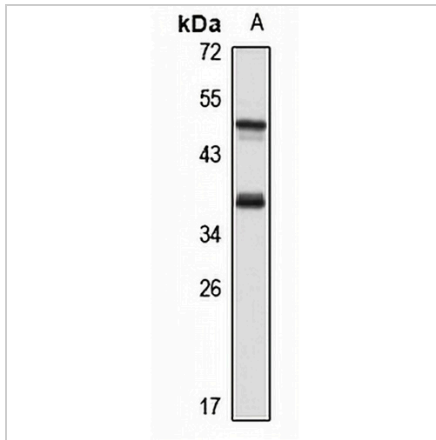
Description	Rabbit polyclonal antibody to TRAP-alpha
Specificity	Recognizes endogenous levels of TRAP-alpha protein
Antibody Type	Primary antibody
Immunogen	Recombinant fusion protein of human TRAP-alpha. The exact sequence is proprietary.
Purification	The antibody was purified by immunogen affinity chromatography.
Molecular Weight	Predicted: 29; Observed: 37 kD
Form/Buffer	Liquid in 0.42% Potassium phosphate, 0.87% Sodium chloride, pH 7.3, 30% glycerol, and 0.01% sodium azide.
Alternative Names	TRAPA; Translocon-associated protein subunit alpha; TRAP-alpha; Signal sequence receptor subunit alpha; SSR-alpha
Gene Symbol	SSR1
Entrez Gene	6745(Human); 107513(Mouse)
SwissProt	P43307(Human); Q9CY50(Mouse)

*AREX continuously optimizes our products. Webpage content may not reflect the latest updates. For inquiries, please contact info@arexbio.com or your local distributor.

*Clone Number, Reactivity, Source/Host and Clonality can be found in the product name and Key Features section above.

DATASHEET**TRAP-alpha Rabbit Polyclonal Antibody**

CAT. NO. APA16985

DATA

Western blot analysis of TRAP-alpha expression in HeLa (A) whole cell lysates. (Predicted band size: 29; 32 kD; Observed band size: 37 kD)

STORAGE

Store at 4°C short term. For long term storage, store at -20°C, avoiding freeze/thaw cycles.

NOTE

For Research Use Only. Not for diagnostic, therapeutics, prophylactic or in vivo use.