

DATASHEET

TRAP gamma Rabbit Polyclonal Antibody

CAT. NO. APA16986

KEY FEATURES

Target	TRAP gamma	Source / Host	Rabbit
Reactivity	Human, Mouse, Rat	Clonality	Polyclonal
Applications	WB, IHC	Conjugation	Unconjugated
Form / Buffer	Liquid in 0.42% Potassium phosphate, 0.87% Sodium chloride, pH 7.3, 30% glycerol, and 0.01% sodium azide.		Storage at -20°C

BACKGROUND

TRAP proteins are part of a complex whose function is to bind calcium to the ER membrane and thereby regulate the retention of ER resident proteins.

APPLICATION

To ensure optimal assay performance, AREX recommends conducting reagent titration tailored to each testing system for optimal detection results.

WB	1:500 - 1:2000
IHC	1:50 - 1:200

*Results are sample-specific. Please refer to your local assay conditions and test parameters for reference.

PRODUCT OVERVIEW

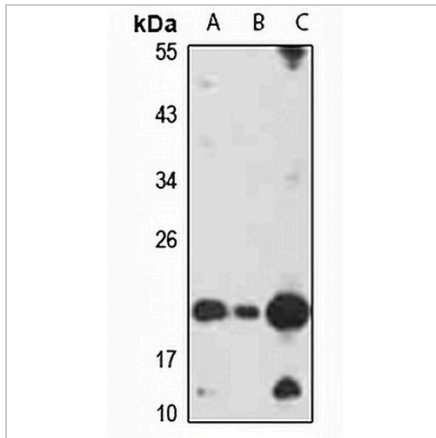
Description	Rabbit polyclonal antibody to TRAP gamma
Specificity	Recognizes endogenous levels of TRAP gamma protein
Antibody Type	Primary antibody
Immunogen	Recombinant fusion protein of human TRAP gamma. The exact sequence is proprietary.
Purification	The antibody was purified by immunogen affinity chromatography.
Molecular Weight	Predicted: 21 kD; Observed: 21 kD
Form/Buffer	Liquid in 0.42% Potassium phosphate, 0.87% Sodium chloride, pH 7.3, 30% glycerol, and 0.01% sodium azide.
Alternative Names	TRAPG; Translocon-associated protein subunit gamma; TRAP-gamma; Signal sequence receptor subunit gamma; SSR-gamma
Gene Symbol	SSR3
Entrez Gene	6747(Human); 67437(Mouse); 81784(Rat)
SwissProt	Q9UNL2(Human); Q9DCF9(Mouse); Q08013(Rat)

*AREX continuously optimizes our products. Webpage content may not reflect the latest updates. For inquiries, please contact info@arexbio.com or your local distributor.

*Clone Number, Reactivity, Source/Host and Clonality can be found in the product name and Key Features section above.

DATASHEET**TRAP gamma Rabbit Polyclonal Antibody**

CAT. NO. APA16986

DATA

Western blot analysis of TRAP gamma expression in K562 (A), mouse uterus (B), rat pancreas (C) whole cell lysates. (Predicted band size: 21 kD; Observed band size: 21 kD)

STORAGE

Store at 4°C short term. For long term storage, store at -20°C, avoiding freeze/thaw cycles.

NOTE

For Research Use Only. Not for diagnostic, therapeutics, prophylactic or in vivo use.