

DATASHEET

TRAP-delta Rabbit Polyclonal Antibody

CAT. NO. APA16987

KEY FEATURES

Target	TRAP-delta	Source / Host	Rabbit
Reactivity	Human, Mouse, Rat	Clonality	Polyclonal
Applications	WB	Conjugation	Unconjugated
Form / Buffer	Liquid in 0.42% Potassium phosphate, 0.87% Sodium chloride, pH 7.3, 30% glycerol, and 0.01% sodium azide.		Storage at -20°C

BACKGROUND

TRAP proteins are part of a complex whose function is to bind calcium to the ER membrane and thereby regulate the retention of ER resident proteins.

APPLICATION

To ensure optimal assay performance, AREX recommends conducting reagent titration tailored to each testing system for optimal detection results.

WB	1:500 - 1:2000
----	----------------

*Results are sample-specific. Please refer to your local assay conditions and test parameters for reference.

PRODUCT OVERVIEW

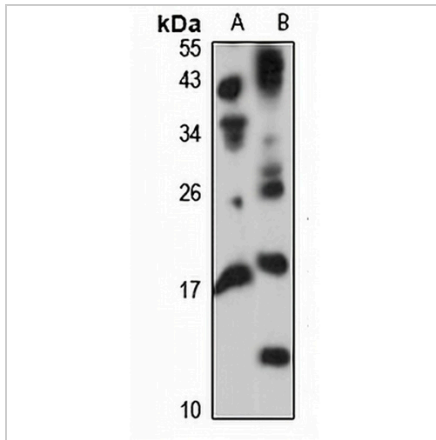
Description	Rabbit polyclonal antibody to TRAP-delta
Specificity	Recognizes endogenous levels of TRAP-delta protein
Antibody Type	Primary antibody
Immunogen	Recombinant fusion protein of human TRAP-delta. The exact sequence is proprietary.
Purification	The antibody was purified by immunogen affinity chromatography.
Molecular Weight	Predicted: 18 kD; Observed: 19 kD
Form/Buffer	Liquid in 0.42% Potassium phosphate, 0.87% Sodium chloride, pH 7.3, 30% glycerol, and 0.01% sodium azide.
Alternative Names	TRAPD; Translocon-associated protein subunit delta; TRAP-delta; Signal sequence receptor subunit delta; SSR-delta
Gene Symbol	SSR4
Entrez Gene	6748(Human); 20832(Mouse); 29435(Rat)
SwissProt	P51571(Human); Q62186(Mouse); Q07984(Rat)

*AREX continuously optimizes our products. Webpage content may not reflect the latest updates. For inquiries, please contact info@arexbio.com or your local distributor.

*Clone Number, Reactivity, Source/Host and Clonality can be found in the product name and Key Features section above.

DATASHEET**TRAP-delta Rabbit Polyclonal Antibody**

CAT. NO. APA16987

DATA

Western blot analysis of TRAP-delta expression in MCF7 (A), mouse liver (B) whole cell lysates. (Predicted band size: 18 kD; Observed band size: 19 kD)

STORAGE

Store at 4°C short term. For long term storage, store at -20°C, avoiding freeze/thaw cycles.

NOTE

For Research Use Only. Not for diagnostic, therapeutics, prophylactic or in vivo use.