

DATASHEET

SA-1 Rabbit Polyclonal Antibody

CAT. NO. APA16996

KEY FEATURES

Target	SA-1	Source / Host	Rabbit
Reactivity	Human, Mouse	Clonality	Polyclonal
Applications	WB	Conjugation	Unconjugated
Form / Buffer	Liquid in 0.42% Potassium phosphate, 0.87% Sodium chloride, pH 7.3, 30% glycerol, and 0.01% sodium azide.		Storage at-20°C

BACKGROUND

Component of cohesin complex, a complex required for the cohesion of sister chromatids after DNA replication. The cohesin complex apparently forms a large proteinaceous ring within which sister chromatids can be trapped. At anaphase, the complex is cleaved and dissociates from chromatin, allowing sister chromatids to segregate. The cohesin complex may also play a role in spindle pole assembly during mitosis.

APPLICATION

To ensure optimal assay performance, AREX recommends conducting reagent titration tailored to each testing system for optimal detection results.

WB	1:500 - 1:2000
----	----------------

*Results are sample-specific. Please refer to your local assay conditions and test parameters for reference.

PRODUCT OVERVIEW

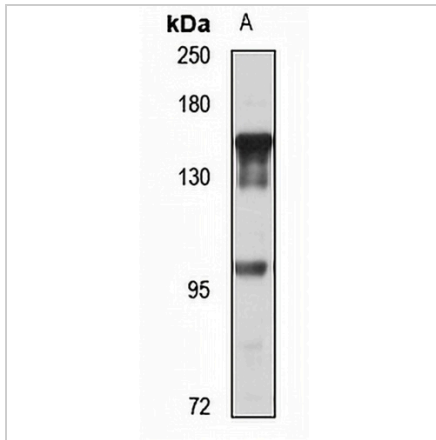
Description	Rabbit polyclonal antibody to SA-1
Specificity	Recognizes endogenous levels of SA-1 protein
Antibody Type	Primary antibody
Immunogen	KLH-conjugated synthetic peptide of human SA-1. The exact sequence is proprietary.
Purification	The antibody was purified by immunogen affinity chromatography.
Molecular Weight	Predicted: 144 kD; Observed: 144 kD
Form/Buffer	Liquid in 0.42% Potassium phosphate, 0.87% Sodium chloride, pH 7.3, 30% glycerol, and 0.01% sodium azide.
Alternative Names	SA1; Cohesin subunit SA-1; SCC3 homolog 1; Stromal antigen 1
Gene Symbol	STAG1
Entrez Gene	10274(Human); 20842(Mouse)
SwissProt	Q8WVM7(Human); Q9D3E6(Mouse)

*AREX continuously optimizes our products. Webpage content may not reflect the latest updates. For inquiries, please contact info@arexbio.com or your local distributor.

*Clone Number, Reactivity, Source/Host and Clonality can be found in the product name and Key Features section above.

DATASHEET**SA-1 Rabbit Polyclonal Antibody**

CAT. NO. APA16996

DATA

Western blot analysis of SA-1 expression in Jurkat (A) whole cell lysates. (Predicted band size: 144 kD; Observed band size: 144 kD)

STORAGE

Store at 4°C short term. For long term storage, store at -20°C, avoiding freeze/thaw cycles.

NOTE

For Research Use Only. Not for diagnostic, therapeutics, prophylactic or in vivo use.