

DATASHEET

ILPIP Rabbit Polyclonal Antibody

CAT. NO. APA17007

KEY FEATURES

Target	ILPIP	Source / Host	Rabbit
Reactivity	Human, Mouse	Clonality	Polyclonal
Applications	WB	Conjugation	Unconjugated
Form / Buffer	Liquid in 0.42% Potassium phosphate, 0.87% Sodium chloride, pH 7.3, 30% glycerol, and 0.01% sodium azide.		Storage at -20°C

BACKGROUND

Pseudokinase which, in complex with CAB39/MO25 (CAB39/MO25alpha or CAB39L/MO25beta), binds to and activates STK11/LKB1. Adopts a closed conformation typical of active protein kinases and binds STK11/LKB1 as a pseudosubstrate, promoting conformational change of STK11/LKB1 in an active conformation .

APPLICATION

To ensure optimal assay performance, AREX recommends conducting reagent titration tailored to each testing system for optimal detection results.

WB	1:500 - 1:2000
----	----------------

*Results are sample-specific. Please refer to your local assay conditions and test parameters for reference.

PRODUCT OVERVIEW

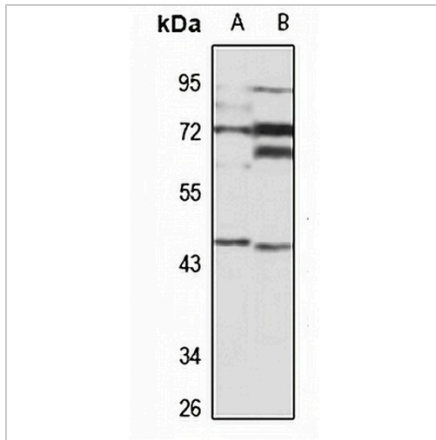
Description	Rabbit polyclonal antibody to ILPIP
Specificity	Recognizes endogenous levels of ILPIP protein
Antibody Type	Primary antibody
Immunogen	Recombinant fusion protein of human ILPIP. The exact sequence is proprietary.
Purification	The antibody was purified by immunogen affinity chromatography.
Molecular Weight	Predicted: 31; Observed: 47 kD
Form/Buffer	Liquid in 0.42% Potassium phosphate, 0.87% Sodium chloride, pH 7.3, 30% glycerol, and 0.01% sodium azide.
Alternative Names	ALS2CR2; ILPIP; STE20-related kinase adapter protein beta; STRAD beta; Amyotrophic lateral sclerosis 2 chromosomal region candidate gene 2 protein; CALS-21; ILP-interacting protein; Pseudokinase ALS2CR2
Gene Symbol	STRADB
Entrez Gene	55437(Human); 227154(Mouse)
SwissProt	Q9C0K7(Human); Q8K4T3(Mouse)

*AREX continuously optimizes our products. Webpage content may not reflect the latest updates. For inquiries, please contact info@arexbio.com or your local distributor.

*Clone Number, Reactivity, Source/Host and Clonality can be found in the product name and Key Features section above.

DATASHEET**ILPIP Rabbit Polyclonal Antibody**

CAT. NO. APA17007

DATA

Western blot analysis of ILPIP expression in HT29 (A), mouse liver (B) whole cell lysates. (Predicted band size: 31; 42; 47 kD; Observed band size: 47 kD)

STORAGE

Store at 4°C short term. For long term storage, store at -20°C, avoiding freeze/thaw cycles.

NOTE

For Research Use Only. Not for diagnostic, therapeutics, prophylactic or in vivo use.