

**DATASHEET**

**Syntaxin-16 Rabbit Polyclonal Antibody**

CAT. NO. APA17013

**KEY FEATURES**

Target	Syntaxin-16	Source / Host	Rabbit
Reactivity	Human, Mouse, Rat	Clonality	Polyclonal
Applications	WB	Conjugation	Unconjugated
Form / Buffer	Liquid in 0.42% Potassium phosphate, 0.87% Sodium chloride, pH 7.3, 30% glycerol, and 0.01% sodium azide.		Storage at -20°C

**BACKGROUND**

SNARE involved in vesicular transport from the late endosomes to the trans-Golgi network.

**APPLICATION**

To ensure optimal assay performance, AREX recommends conducting reagent titration tailored to each testing system for optimal detection results.

WB	1:500 - 1:1000
----	----------------

\*Results are sample-specific. Please refer to your local assay conditions and test parameters for reference.

**PRODUCT OVERVIEW**

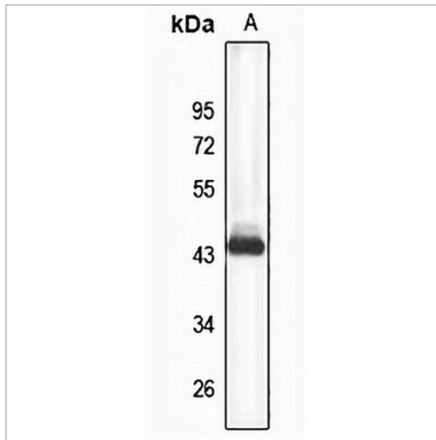
Description	Rabbit polyclonal antibody to Syntaxin-16
Specificity	Recognizes endogenous levels of Syntaxin-16 protein
Antibody Type	Primary antibody
Immunogen	Recombinant fusion protein of human Syntaxin-16. The exact sequence is proprietary.
Purification	The antibody was purified by immunogen affinity chromatography.
Molecular Weight	Predicted: 13; Observed: 44 kD
Form/Buffer	Liquid in 0.42% Potassium phosphate, 0.87% Sodium chloride, pH 7.3, 30% glycerol, and 0.01% sodium azide.
Alternative Names	Syntaxin-16; Syn16
Gene Symbol	STX16
Entrez Gene	8675(Human); 228960(Mouse)
SwissProt	O14662(Human); Q8BVI5(Mouse)

\*AREX continuously optimizes our products. Webpage content may not reflect the latest updates. For inquiries, please contact [info@arexbio.com](mailto:info@arexbio.com) or your local distributor.

\*Clone Number, Reactivity, Source/Host and Clonality can be found in the product name and Key Features section above.

**DATASHEET****Syntaxin-16 Rabbit Polyclonal Antibody**

CAT. NO. APA17013

**DATA**

Western blot analysis of Syntaxin-16 expression in MCF7 (A) whole cell lysates. (Predicted band size: 13; 31; 34; 35; 36; 37 kD; Observed band size: 44 kD)

**STORAGE**

Store at 4°C short term. For long term storage, store at -20°C, avoiding freeze/thaw cycles.

**NOTE**

For Research Use Only. Not for diagnostic, therapeutics, prophylactic or in vivo use.