

DATASHEET

Syntaxin 6 Rabbit Polyclonal Antibody

CAT. NO. APA17016

KEY FEATURES

Target	Syntaxin 6	Source / Host	Rabbit
Reactivity	Human, Mouse, Rat	Clonality	Polyclonal
Applications	WB	Conjugation	Unconjugated
Form / Buffer	Liquid in 0.42% Potassium phosphate, 0.87% Sodium chloride, pH 7.3, 30% glycerol, and 0.01% sodium azide.		Storage at -20°C

BACKGROUND

SNARE promoting movement of transport vesicles to target membranes. Targets endosomes to the trans-Golgi network, and may therefore function in retrograde trafficking. Together with SNARE STX12, promotes movement of vesicles from endosomes to the cell membrane, and may therefore function in the endocytic recycling pathway.

APPLICATION

To ensure optimal assay performance, AREX recommends conducting reagent titration tailored to each testing system for optimal detection results.

WB	1:500 - 1:2000
----	----------------

*Results are sample-specific. Please refer to your local assay conditions and test parameters for reference.

PRODUCT OVERVIEW

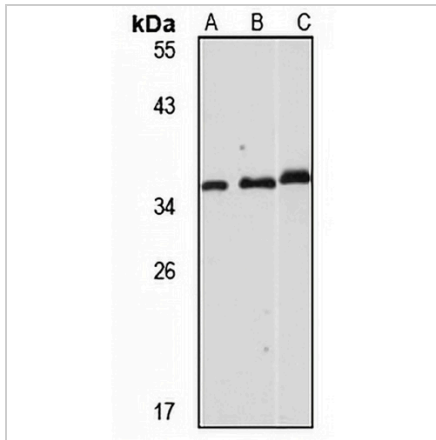
Description	Rabbit polyclonal antibody to Syntaxin 6
Specificity	Recognizes endogenous levels of Syntaxin 6 protein
Antibody Type	Primary antibody
Immunogen	Recombinant fusion protein of human Syntaxin 6. The exact sequence is proprietary.
Purification	The antibody was purified by immunogen affinity chromatography.
Molecular Weight	Predicted: 17; Observed: 37 kD
Form/Buffer	Liquid in 0.42% Potassium phosphate, 0.87% Sodium chloride, pH 7.3, 30% glycerol, and 0.01% sodium azide.
Alternative Names	Syntaxin-6
Gene Symbol	STX6
Entrez Gene	10228(Human); 58244(Mouse); 60562(Rat)
SwissProt	O43752(Human); Q9JJK1(Mouse); Q63635(Rat)

*AREX continuously optimizes our products. Webpage content may not reflect the latest updates. For inquiries, please contact info@arexbio.com or your local distributor.

*Clone Number, Reactivity, Source/Host and Clonality can be found in the product name and Key Features section above.

DATASHEET**Syntaxin 6 Rabbit Polyclonal Antibody**

CAT. NO. APA17016

DATA

Western blot analysis of Syntaxin 6 expression in HeLa (A), mouse brain (B), rat brain (C) whole cell lysates. (Predicted band size: 17; 29 kD; Observed band size: 37 kD)

STORAGE

Store at 4°C short term. For long term storage, store at -20°C, avoiding freeze/thaw cycles.

NOTE

For Research Use Only. Not for diagnostic, therapeutics, prophylactic or in vivo use.