

**DATASHEET**

**Tomosyn-1 Rabbit Polyclonal Antibody**

CAT. NO. APA17018

**KEY FEATURES**

Target	Tomosyn-1	Source / Host	Rabbit
Reactivity	Human, Rat	Clonality	Polyclonal
Applications	WB	Conjugation	Unconjugated
Form / Buffer	Liquid in 0.42% Potassium phosphate, 0.87% Sodium chloride, pH 7.3, 30% glycerol, and 0.01% sodium azide.		Storage at -20°C

**BACKGROUND**

Plays a regulatory role in calcium-dependent exocytosis and neurotransmitter release. Inhibits membrane fusion between transport vesicles and the plasma membrane. May modulate the assembly of trans-SNARE complexes between transport vesicles and the plasma membrane. Inhibits translocation of GLUT4 from intracellular vesicles to the plasma membrane. Competes with STXBP1 for STX1 binding .

**APPLICATION**

To ensure optimal assay performance, AREX recommends conducting reagent titration tailored to each testing system for optimal detection results.

WB	1:500 - 1:2000
----	----------------

\*Results are sample-specific. Please refer to your local assay conditions and test parameters for reference.

**PRODUCT OVERVIEW**

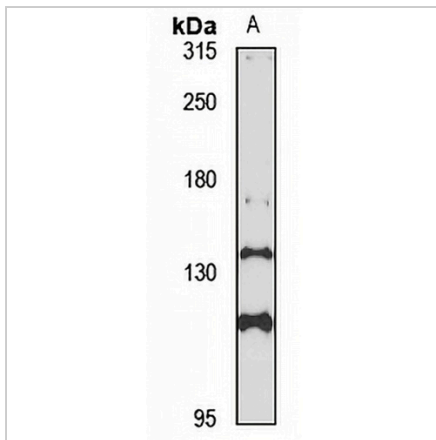
Description	Rabbit polyclonal antibody to Tomosyn-1
Specificity	Recognizes endogenous levels of Tomosyn-1 protein
Antibody Type	Primary antibody
Immunogen	Recombinant fusion protein of human Tomosyn-1. The exact sequence is proprietary.
Purification	The antibody was purified by immunogen affinity chromatography.
Molecular Weight	Predicted: 121; Observed: 135 kD
Form/Buffer	Liquid in 0.42% Potassium phosphate, 0.87% Sodium chloride, pH 7.3, 30% glycerol, and 0.01% sodium azide.
Alternative Names	LLGL3; Syntaxin-binding protein 5; Lethal(2) giant larvae protein homolog 3; Tomosyn-1
Gene Symbol	STXBP5
Entrez Gene	134957(Human); 81022(Rat)
SwissProt	Q5T5C0(Human); Q9WU70(Rat)

\*AREX continuously optimizes our products. Webpage content may not reflect the latest updates. For inquiries, please contact [info@arexbio.com](mailto:info@arexbio.com) or your local distributor.

\*Clone Number, Reactivity, Source/Host and Clonality can be found in the product name and Key Features section above.

**DATASHEET****Tomosyn-1 Rabbit Polyclonal Antibody**

CAT. NO. APA17018

**DATA**

Western blot analysis of Tomosyn-1 expression in HepG2 (A) whole cell lysates. (Predicted band size: 121; 123; 127 kD; Observed band size: 135 kD)

**STORAGE**

Store at 4°C short term. For long term storage, store at -20°C, avoiding freeze/thaw cycles.

**NOTE**

For Research Use Only. Not for diagnostic, therapeutics, prophylactic or in vivo use.