

DATASHEET

SUGCT Rabbit Polyclonal Antibody

CAT. NO. APA17021

KEY FEATURES

Target	SUGCT	Source / Host	Rabbit
Reactivity	Human, Mouse, Rat	Clonality	Polyclonal
Applications	WB	Conjugation	Unconjugated
Form / Buffer	Liquid in 0.42% Potassium phosphate, 0.87% Sodium chloride, pH 7.3, 30% glycerol, and 0.01% sodium azide.		Storage at -20°C

BACKGROUND

Coenzyme A (CoA) transferase that reversibly catalyzes the transfer of a CoA moiety from a dicarboxyl-CoA to a dicarboxylate in a metabolite recycling process. Displays preference for succinyl-CoA and glutarate-CoA as dicarboxyl-CoA donors and glutarate, succinate, adipate/hexanedioate, itaconate and 3-hydroxy-3-methylglutarate as dicarboxylate acceptors transferase that reversibly catalyzes the transfer of a CoA moiety from a dicarboxyl-CoA to a dicarboxylate in a metabolite recycling process. Displays preference for succinyl-CoA and glutarate-CoA as dicarboxyl-CoA donors and glutarate, succinate, adipate/hexanedioate, itaconate and 3-hydroxy-3-methylglutarate as dicarboxylate acceptors .

APPLICATION

To ensure optimal assay performance, AREX recommends conducting reagent titration tailored to each testing system for optimal detection results.

WB	1:500 - 1:1000
----	----------------

*Results are sample-specific. Please refer to your local assay conditions and test parameters for reference.

PRODUCT OVERVIEW

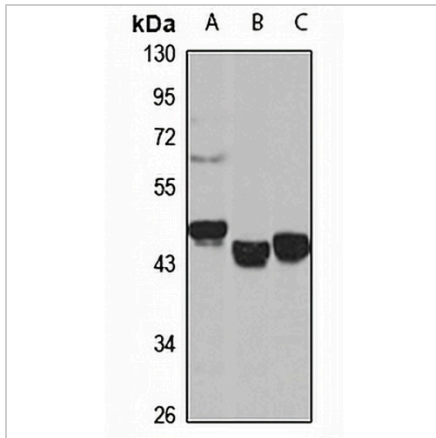
Description	Rabbit polyclonal antibody to SUGCT
Specificity	Recognizes endogenous levels of SUGCT protein
Antibody Type	Primary antibody
Immunogen	Recombinant fusion protein of human SUGCT. The exact sequence is proprietary.
Purification	The antibody was purified by immunogen affinity chromatography.
Molecular Weight	Predicted: 43; Observed: 48 kD
Form/Buffer	Liquid in 0.42% Potassium phosphate, 0.87% Sodium chloride, pH 7.3, 30% glycerol, and 0.01% sodium azide.
Alternative Names	C7orf10; DERP13; Succinate--hydroxymethylglutarate CoA-transferase; Dermal papilla-derived protein 13; SuccinylCoA:glutarate-CoA transferase
Gene Symbol	SUGCT
Entrez Gene	79783(Human); 192136(Mouse); 361253(Rat)
SwissProt	Q9HAC7(Human); Q7TNE1(Mouse); Q68FU4(Rat)

*AREX continuously optimizes our products. Webpage content may not reflect the latest updates. For inquiries, please contact info@arexbio.com or your local distributor.

*Clone Number, Reactivity, Source/Host and Clonality can be found in the product name and Key Features section above.

DATASHEET**SUGCT Rabbit Polyclonal Antibody**

CAT. NO. APA17021

DATA

Western blot analysis of SUGCT expression in HepG2 (A), mouse liver (B), rat kidney (C) whole cell lysates. (Predicted band size: 43; 47; 48; 51 kD; Observed band size: 48 kD)

STORAGE

Store at 4°C short term. For long term storage, store at -20°C, avoiding freeze/thaw cycles.

NOTE

For Research Use Only. Not for diagnostic, therapeutics, prophylactic or in vivo use.