

DATASHEET

Sulf-1 Rabbit Polyclonal Antibody

CAT. NO. APA17024

KEY FEATURES

Target	Sulf-1	Source / Host	Rabbit
Reactivity	Human	Clonality	Polyclonal
Applications	WB	Conjugation	Unconjugated
Form / Buffer	Liquid in 0.42% Potassium phosphate, 0.87% Sodium chloride, pH 7.3, 30% glycerol, and 0.01% sodium azide.		Storage at-20°C

BACKGROUND

Exhibits arylsulfatase activity and highly specific endoglucosamine-6-sulfatase activity . It can remove sulfate from the C-6 position of glucosamine within specific subregions of intact heparin . Diminishes HSPG (heparan sulfate proteoglycans) sulfation, inhibits signaling by heparin-dependent growth factors, diminishes proliferation, and facilitates apoptosis in response to exogenous stimulation .

APPLICATION

To ensure optimal assay performance, AREX recommends conducting reagent titration tailored to each testing system for optimal detection results.

WB	1:500 - 1:2000
----	----------------

*Results are sample-specific. Please refer to your local assay conditions and test parameters for reference.

PRODUCT OVERVIEW

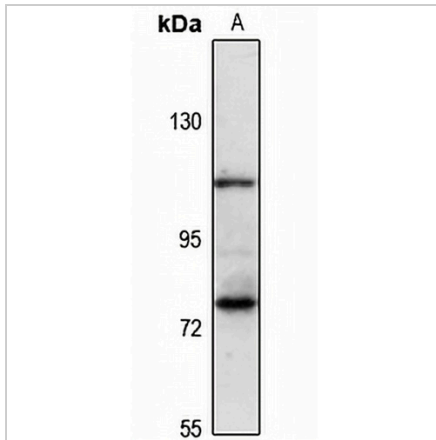
Description	Rabbit polyclonal antibody to Sulf-1
Specificity	Recognizes endogenous levels of Sulf-1 protein
Antibody Type	Primary antibody
Immunogen	Recombinant fusion protein of human Sulf-1. The exact sequence is proprietary.
Purification	The antibody was purified by immunogen affinity chromatography.
Molecular Weight	Predicted: 101 kD; Observed: 101 kD
Form/Buffer	Liquid in 0.42% Potassium phosphate, 0.87% Sodium chloride, pH 7.3, 30% glycerol, and 0.01% sodium azide.
Alternative Names	KIAA1077; Extracellular sulfatase Sulf-1; hSulf-1
Gene Symbol	SULF1
Entrez Gene	23213(Human)
SwissProt	Q8IWU6(Human)

*AREX continuously optimizes our products. Webpage content may not reflect the latest updates. For inquiries, please contact info@arexbio.com or your local distributor.

*Clone Number, Reactivity, Source/Host and Clonality can be found in the product name and Key Features section above.

DATASHEET**Sulf-1 Rabbit Polyclonal Antibody**

CAT. NO. APA17024

DATA

Western blot analysis of Sulf-1 expression in U87MG (A) whole cell lysates. (Predicted band size: 101 kD; Observed band size: 101 kD)

STORAGE

Store at 4°C short term. For long term storage, store at -20°C, avoiding freeze/thaw cycles.

NOTE

For Research Use Only. Not for diagnostic, therapeutics, prophylactic or in vivo use.