

DATASHEET

SULT1A3 Rabbit Polyclonal Antibody

CAT. NO. APA17025

KEY FEATURES

Target	SULT1A3	Source / Host	Rabbit
Reactivity	Human, Mouse, Rat	Clonality	Polyclonal
Applications	WB, IHC, IF/ICC	Conjugation	Unconjugated
Form / Buffer	Liquid in 0.42% Potassium phosphate, 0.87% Sodium chloride, pH 7.3, 30% glycerol, and 0.01% sodium azide.		Storage at -20°C

BACKGROUND

Sulfotransferase that utilizes 3'-phospho-5'-adenylyl sulfate (PAPS) as sulfonate donor to catalyze the sulfate conjugation of phenolic monoamines (neurotransmitters such as dopamine, (R)-adrenaline/epinephrine, (R)-noradrenaline/norepinephrine and serotonin) and phenolic and catechol drugs as sulfonate donor to catalyze the sulfate conjugation of phenolic monoamines (neurotransmitters such as dopamine, (R)-adrenaline/epinephrine, (R)-noradrenaline/norepinephrine and serotonin) and phenolic and catechol drugs. Catalyzes the sulfation of T4 (L-thyroxine/3,5,3',5'-tetraiodothyronine), T3 (3,5,3'-triiodothyronine), rT3 (3,3',5'-triiodothyronine) and 3,3'-T2 (3,3'-diiodothyronine), with a substrate preference of 3,3'-T2 > rT3 > T3 > T4.

APPLICATION

To ensure optimal assay performance, AREX recommends conducting reagent titration tailored to each testing system for optimal detection results.

WB	1:500 - 1:2000
IHC	1:50 - 1:200
IF/ICC	1:50 - 1:200

*Results are sample-specific. Please refer to your local assay conditions and test parameters for reference.

PRODUCT OVERVIEW

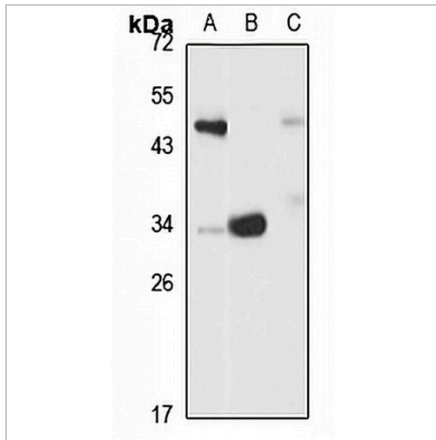
Description	Rabbit polyclonal antibody to SULT1A3
Specificity	Recognizes endogenous levels of SULT1A3 protein
Antibody Type	Primary antibody
Immunogen	Recombinant fusion protein of human SULT1A3. The exact sequence is proprietary.
Purification	The antibody was purified by immunogen affinity chromatography.
Molecular Weight	Predicted: 34 kD; Observed: 34 kD
Form/Buffer	Liquid in 0.42% Potassium phosphate, 0.87% Sodium chloride, pH 7.3, 30% glycerol, and 0.01% sodium azide.
Alternative Names	STM; Sulfotransferase 1A3/1A4; ST1A3/ST1A4; Aryl sulfotransferase 1A3/1A4; Catecholamine-sulfating phenol sulfotransferase; HAST3; M-PST; Monoamine-sulfating phenol sulfotransferase; Placental estrogen sulfotransferase; Sulfotransferase monoamine-preferring; Thermolabile phenol sulfotransferase; TL-PST
Gene Symbol	SULT1A3
Entrez Gene	101929857; 445329; 6818(Human)
SwissProt	P50224(Human)

*AREX continuously optimizes our products. Webpage content may not reflect the latest updates. For inquiries, please contact info@arexbio.com or your local distributor.

*Clone Number, Reactivity, Source/Host and Clonality can be found in the product name and Key Features section above.

DATASHEET**SULT1A3 Rabbit Polyclonal Antibody**

CAT. NO. APA17025

DATA

Western blot analysis of SULT1A3 expression in HT29 (A), mouse kidney (B), rat liver (C) whole cell lysates. (Predicted band size: 34 kD; Observed band size: 34 kD)

STORAGE

Store at 4°C short term. For long term storage, store at -20°C, avoiding freeze/thaw cycles.

NOTE

For Research Use Only. Not for diagnostic, therapeutics, prophylactic or in vivo use.