

DATASHEET

SUMF1 Rabbit Polyclonal Antibody

CAT. NO. APA17026

KEY FEATURES

Target	SUMF1	Source / Host	Rabbit
Reactivity	Human, Mouse	Clonality	Polyclonal
Applications	WB	Conjugation	Unconjugated
Form / Buffer	Liquid in 0.42% Potassium phosphate, 0.87% Sodium chloride, pH 7.3, 30% glycerol, and 0.01% sodium azide.		Storage at -20°C

BACKGROUND

Oxidase that catalyzes the conversion of cysteine to 3-oxoalanine on target proteins, using molecular oxygen and an unidentified reducing agent. 3-oxoalanine modification, which is also named formylglycine (fGly), occurs in the maturation of arylsulfatases and some alkaline phosphatases that use the hydrated form of 3-oxoalanine as a catalytic nucleophile. Known substrates include GALNS, ARSA, STS and ARSE.

APPLICATION

To ensure optimal assay performance, AREX recommends conducting reagent titration tailored to each testing system for optimal detection results.

WB	1:500 - 1:2000
----	----------------

*Results are sample-specific. Please refer to your local assay conditions and test parameters for reference.

PRODUCT OVERVIEW

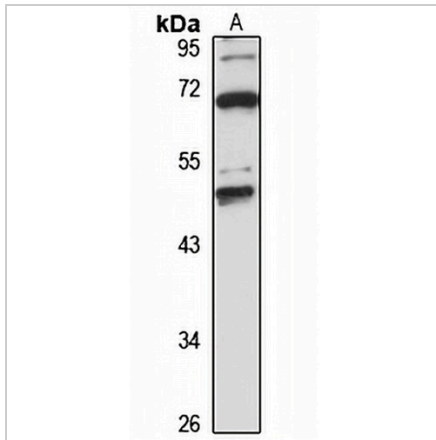
Description	Rabbit polyclonal antibody to SUMF1
Specificity	Recognizes endogenous levels of SUMF1 protein
Antibody Type	Primary antibody
Immunogen	Recombinant fusion protein of human SUMF1. The exact sequence is proprietary.
Purification	The antibody was purified by immunogen affinity chromatography.
Molecular Weight	Predicted: 31; Observed: 46 kD
Form/Buffer	Liquid in 0.42% Potassium phosphate, 0.87% Sodium chloride, pH 7.3, 30% glycerol, and 0.01% sodium azide.
Alternative Names	FGE; Sulfatase-modifying factor 1; C-alpha-formylglycine-generating enzyme 1
Gene Symbol	SUMF1
Entrez Gene	285362(Human); 58911(Mouse)
SwissProt	Q8NBK3(Human); Q8R0F3(Mouse)

*AREX continuously optimizes our products. Webpage content may not reflect the latest updates. For inquiries, please contact info@arexbio.com or your local distributor.

*Clone Number, Reactivity, Source/Host and Clonality can be found in the product name and Key Features section above.

DATASHEET**SUMF1 Rabbit Polyclonal Antibody**

CAT. NO. APA17026

DATA

Western blot analysis of SUMF1 expression in Jurkat (A) whole cell lysates. (Predicted band size: 31; 37; 38; 40; 46 kD; Observed band size: 46 kD)

STORAGE

Store at 4°C short term. For long term storage, store at -20°C, avoiding freeze/thaw cycles.

NOTE

For Research Use Only. Not for diagnostic, therapeutics, prophylactic or in vivo use.