

**DATASHEET**

**SUMF2 Rabbit Polyclonal Antibody**

CAT. NO. APA17027

**KEY FEATURES**

|               |   |               |                     |
|---------------|---|---------------|---------------------|
| Target        | SUMF2   | Source / Host | Rabbit              |
| Reactivity    | Human, Mouse  | Clonality     | Polyclonal          |
| Applications  | WB, IF/ICC  | Conjugation   | Unconjugated        |
| Form / Buffer | Liquid in 0.42% Potassium phosphate, 0.87% Sodium chloride, pH 7.3, 30% glycerol, and 0.01% sodium azide. |               | Storage<br>at -20°C |

**BACKGROUND**

Lacks formylglycine generating activity and is unable to convert newly synthesized inactive sulfatases to their active form. Inhibits the activation of sulfatases by SUMF1.

**APPLICATION**

To ensure optimal assay performance, AREX recommends conducting reagent titration tailored to each testing system for optimal detection results.

|        |                |
|--------|----------------|
| WB     | 1:500 - 1:2000 |
| IF/ICC | 1:50 - 1:200   |

\*Results are sample-specific. Please refer to your local assay conditions and test parameters for reference.

**PRODUCT OVERVIEW**

|                   |   |
|-------------------|---|
| Description       | Rabbit polyclonal antibody to SUMF2   |
| Specificity       | Recognizes endogenous levels of SUMF2 protein   |
| Antibody Type     | Primary antibody  |
| Immunogen         | Recombinant fusion protein of human SUMF2. The exact sequence is proprietary.                             |
| Purification      | The antibody was purified by immunogen affinity chromatography.   |
| Molecular Weight  | Predicted: 33 kD; Observed: 33 kD   |
| Form/Buffer       | Liquid in 0.42% Potassium phosphate, 0.87% Sodium chloride, pH 7.3, 30% glycerol, and 0.01% sodium azide. |
| Alternative Names | Sulfatase-modifying factor 2; C-alpha-formylglycine-generating enzyme 2                                   |
| Gene Symbol       | SUMF2   |
| Entrez Gene       | 25870(Human); 67902(Mouse)  |
| SwissProt         | Q8NBJ7(Human); Q8BPG6(Mouse)  |

\*AREX continuously optimizes our products. Webpage content may not reflect the latest updates. For inquiries, please contact [info@arexbio.com](mailto:info@arexbio.com) or your local distributor.

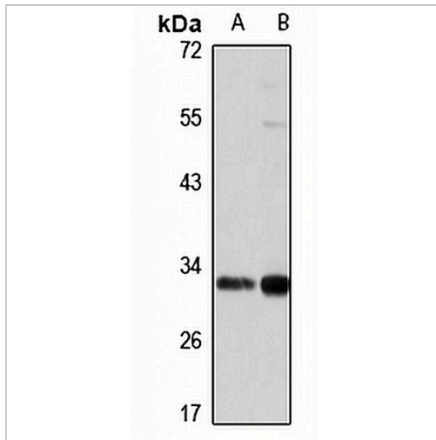
\*Clone Number, Reactivity, Source/Host and Clonality can be found in the product name and Key Features section above.

**DATASHEET**

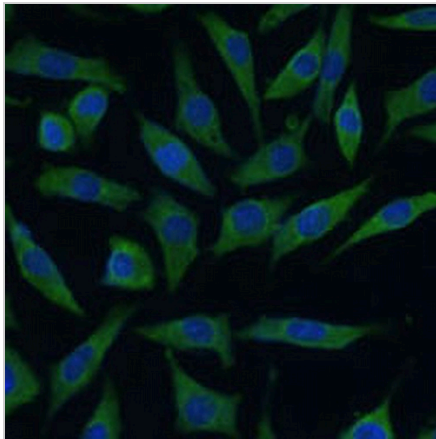
**SUMF2 Rabbit Polyclonal Antibody**

CAT. NO. APA17027

**DATA**



Western blot analysis of SUMF2 expression in A549 (A), HepG2 (B) whole cell lysates. (Predicted band size: 33 kD; Observed band size: 33 kD)



Immunofluorescent analysis of SUMF2 staining in L929 cells. Formalin-fixed cells were permeabilized with 0.1% Triton X-100 in TBS for 5-10 minutes and blocked with 3% BSA-PBS for 30 minutes at room temperature. Cells were probed with the primary antibody in 3% BSA-PBS and incubated overnight at 4 °C in a humidified chamber. Cells were washed with PBST and incubated with a AREX® Fluor 594-conjugated secondary antibody (red) in PBS at room temperature in the dark. DAPI was used to stain the cell nuclei (blue).

**STORAGE**

Store at 4°C short term. For long term storage, store at -20°C, avoiding freeze/thaw cycles.

**NOTE**

For Research Use Only. Not for diagnostic, therapeutics, prophylactic or in vivo use.