

DATASHEET

SURF-4 Rabbit Polyclonal Antibody

CAT. NO. APA17030

KEY FEATURES

Target	SURF-4	Source / Host	Rabbit
Reactivity	Human, Mouse, Rat	Clonality	Polyclonal
Applications	WB, IHC	Conjugation	Unconjugated
Form / Buffer	Liquid in 0.42% Potassium phosphate, 0.87% Sodium chloride, pH 7.3, 30% glycerol, and 0.01% sodium azide.		Storage at -20°C

BACKGROUND

Endoplasmic reticulum cargo receptor that mediates the export of lipoproteins by recruiting cargos into COPII vesicles to facilitate their secretion . Acts as a cargo receptor for lipoproteins bearing both APOB and APOA1, thereby regulating lipoprotein delivery and the maintenance of lipid homeostasis . Synergizes with the GTPase SAR1B to mediate transport of circulating lipoproteins . Promotes the secretion of PCSK9 . Also mediates the efficient secretion of erythropoietin (EPO) . May also play a role in the maintenance of the architecture of the endoplasmic reticulum-Golgi intermediate compartment and of the Golgi .

APPLICATION

To ensure optimal assay performance, AREX recommends conducting reagent titration tailored to each testing system for optimal detection results.

WB	1:500 - 1:2000
IHC	1:50 - 1:200

*Results are sample-specific. Please refer to your local assay conditions and test parameters for reference.

PRODUCT OVERVIEW

Description	Rabbit polyclonal antibody to SURF-4
Specificity	Recognizes endogenous levels of SURF-4 protein
Antibody Type	Primary antibody
Immunogen	Recombinant fusion protein of human SURF-4. The exact sequence is proprietary.
Purification	The antibody was purified by immunogen affinity chromatography.
Molecular Weight	Predicted: 30 kD; Observed: 30 kD
Form/Buffer	Liquid in 0.42% Potassium phosphate, 0.87% Sodium chloride, pH 7.3, 30% glycerol, and 0.01% sodium azide.
Alternative Names	SURF-4; Surfeit locus protein 4
Gene Symbol	SURF4
Entrez Gene	6836(Human); 20932(Mouse)
SwissProt	O15260(Human); Q64310(Mouse)

*AREX continuously optimizes our products. Webpage content may not reflect the latest updates. For inquiries, please contact info@arex.bio or your local distributor.

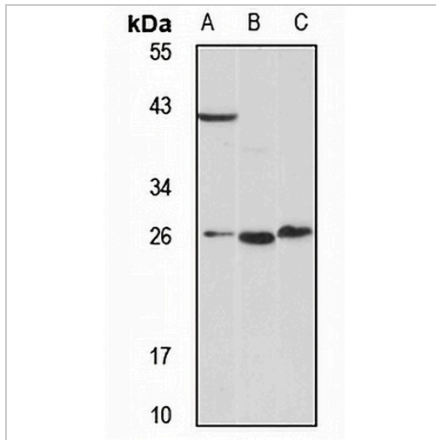
*Clone Number, Reactivity, Source/Host and Clonality can be found in the product name and Key Features section above.

DATASHEET

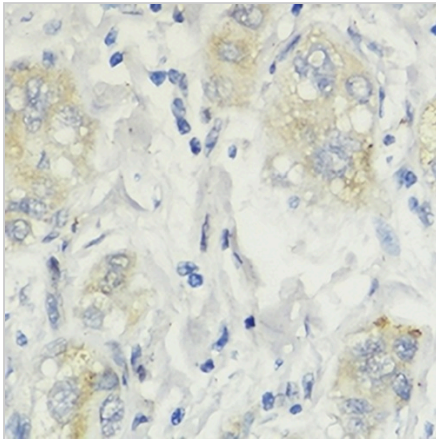
SURF-4 Rabbit Polyclonal Antibody

CAT. NO. APA17030

DATA



Western blot analysis of SURF-4 expression in LO2 (A), mouse brain (B), rat brain (C) whole cell lysates. (Predicted band size: 30 kD; Observed band size: 30 kD)



Immunohistochemical analysis of SURF-4 staining in human liver cancer formalin fixed paraffin embedded tissue section. The section was pre-treated using heat mediated antigen retrieval with sodium citrate buffer (pH 6.0). The section was then incubated with the antibody at room temperature and detected using an HRP conjugated compact polymer system. DAB was used as the chromogen. The section was then counterstained with haematoxylin and mounted with DPX.

STORAGE

Store at 4°C short term. For long term storage, store at -20°C, avoiding freeze/thaw cycles.

NOTE

For Research Use Only. Not for diagnostic, therapeutics, prophylactic or in vivo use.