

DATASHEET

SUV39H1 Rabbit Polyclonal Antibody

CAT. NO. APA17031

KEY FEATURES

Target	SUV39H1	Source / Host	Rabbit
Reactivity	Human, Mouse	Clonality	Polyclonal
Applications	WB, IHC	Conjugation	Unconjugated
Form / Buffer	Liquid in 0.42% Potassium phosphate, 0.87% Sodium chloride, pH 7.3, 30% glycerol, and 0.01% sodium azide.		Storage at -20°C

BACKGROUND

Histone methyltransferase that specifically mediates trimethylation of 'Lys-9' of histone H3 (H3K9me3) using monomethylated H3 'Lys-9' (H3K9me1) as substrate using monomethylated H3 'Lys-9' (H3K9me1) as substrate . Also weakly methylates histone H1 (in vitro) . H3 'Lys-9' trimethylation represents a specific tag for epigenetic transcriptional repression by recruiting HP1 (CBX1, CBX3 and/or CBX5) proteins to methylated histones . Mainly functions in heterochromatin regions, thereby playing a central role in the establishment of constitutive heterochromatin at pericentric and telomere regions . H3 'Lys-9' trimethylation is also required to direct DNA methylation at pericentric repeats .

APPLICATION

To ensure optimal assay performance, AREX recommends conducting reagent titration tailored to each testing system for optimal detection results.

WB	1:500 - 1:1000
IHC	1:50 - 1:200

*Results are sample-specific. Please refer to your local assay conditions and test parameters for reference.

PRODUCT OVERVIEW

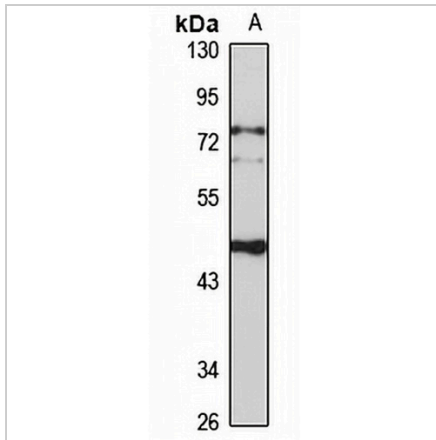
Description	Rabbit polyclonal antibody to SUV39H1
Specificity	Recognizes endogenous levels of SUV39H1 protein
Antibody Type	Primary antibody
Immunogen	Recombinant fusion protein of human SUV39H1. The exact sequence is proprietary.
Purification	The antibody was purified by immunogen affinity chromatography.
Molecular Weight	Predicted: 47; Observed: 48 kD
Form/Buffer	Liquid in 0.42% Potassium phosphate, 0.87% Sodium chloride, pH 7.3, 30% glycerol, and 0.01% sodium azide.
Alternative Names	KMT1A; SUV39H; Histone-lysine N-methyltransferase SUV39H1; Histone H3-K9 methyltransferase 1; H3-K9-HMTase 1; Lysine N-methyltransferase 1A; Position-effect variegation 3-9 homolog; Suppressor of variegation 3-9 homolog 1; Su(var)3-9 homolog 1
Gene Symbol	SUV39H1
Entrez Gene	6839(Human); 20937(Mouse)
SwissProt	O43463(Human); O54864(Mouse)

*AREX continuously optimizes our products. Webpage content may not reflect the latest updates. For inquiries, please contact info@arexbio.com or your local distributor.

*Clone Number, Reactivity, Source/Host and Clonality can be found in the product name and Key Features section above.

DATASHEET**SUV39H1 Rabbit Polyclonal Antibody**

CAT. NO. APA17031

DATA

Western blot analysis of SUV39H1 expression in U87MG (A) whole cell lysates. (Predicted band size: 47; 49 kD; Observed band size: 48 kD)

STORAGE

Store at 4°C short term. For long term storage, store at -20°C, avoiding freeze/thaw cycles.

NOTE

For Research Use Only. Not for diagnostic, therapeutics, prophylactic or in vivo use.