

DATASHEET

SUV420H1 Rabbit Polyclonal Antibody

CAT. NO. APA17032

KEY FEATURES

Target	SUV420H1	Source / Host	Rabbit
Reactivity	Human, Mouse, Rat	Clonality	Polyclonal
Applications	WB	Conjugation	Unconjugated
Form / Buffer	Liquid in 0.42% Potassium phosphate, 0.87% Sodium chloride, pH 7.3, 30% glycerol, and 0.01% sodium azide.		Storage at-20°C

BACKGROUND

Histone methyltransferase that specifically methylates monomethylated 'Lys-20' (H4K20me1) and dimethylated 'Lys-20' (H4K20me2) of histone H4 to produce respectively dimethylated 'Lys-20' (H4K20me2) and trimethylated 'Lys-20' (H4K20me3) and thus regulates transcription and maintenance of genome integrity and dimethylated 'Lys-20' (H4K20me2) of histone H4 to produce respectively dimethylated 'Lys-20' (H4K20me2) and trimethylated 'Lys-20' (H4K20me3) and thus regulates transcription and maintenance of genome integrity . In vitro also methylates unmodified 'Lys-20' (H4K20me0) of histone H4 and nucleosomes . H4 'Lys-20' trimethylation represents a specific tag for epigenetic transcriptional repression.

APPLICATION

To ensure optimal assay performance, AREX recommends conducting reagent titration tailored to each testing system for optimal detection results.

WB	1:500 - 1:2000
----	----------------

*Results are sample-specific. Please refer to your local assay conditions and test parameters for reference.

PRODUCT OVERVIEW

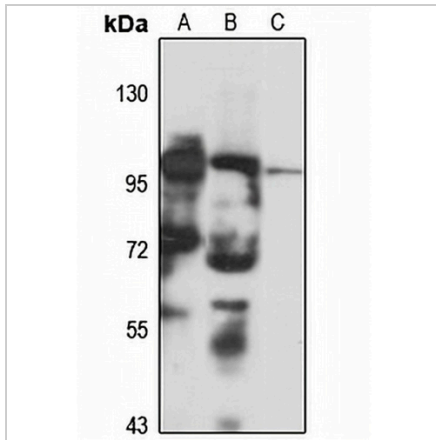
Description	Rabbit polyclonal antibody to SUV420H1
Specificity	Recognizes endogenous levels of SUV420H1 protein
Antibody Type	Primary antibody
Immunogen	KLH-conjugated synthetic peptide of human SUV420H1. The exact sequence is proprietary.
Purification	The antibody was purified by immunogen affinity chromatography.
Molecular Weight	Predicted: 31; Observed: 110 kD
Form/Buffer	Liquid in 0.42% Potassium phosphate, 0.87% Sodium chloride, pH 7.3, 30% glycerol, and 0.01% sodium azide.
Alternative Names	KMT5B; Histone-lysine N-methyltransferase SUV420H1; Lysine N-methyltransferase 5B; Suppressor of variegation 4-20 homolog 1; Su(var)4-20 homolog 1; Suv4-20h1
Gene Symbol	SUV420H1
Entrez Gene	51111(Human); 225888(Mouse); 361688(Rat)
SwissProt	Q4FZB7(Human); Q3U8K7(Mouse); P0C2N5(Rat)

*AREX continuously optimizes our products. Webpage content may not reflect the latest updates. For inquiries, please contact info@arexbio.com or your local distributor.

*Clone Number, Reactivity, Source/Host and Clonality can be found in the product name and Key Features section above.

DATASHEET**SUV420H1 Rabbit Polyclonal Antibody**

CAT. NO. APA17032

DATA

Western blot analysis of SUV420H1 expression in HeLa (A), mouse lung (B), rat uterus (C) whole cell lysates. (Predicted band size: 31; 44; 99 kD; Observed band size: 110 kD)

STORAGE

Store at 4°C short term. For long term storage, store at -20°C, avoiding freeze/thaw cycles.

NOTE

For Research Use Only. Not for diagnostic, therapeutics, prophylactic or in vivo use.