

DATASHEET

Synaptogyrin-1 Rabbit Polyclonal Antibody

CAT. NO. APA17036

KEY FEATURES

Target	Synaptogyrin-1	Source / Host	Rabbit
Reactivity	Human, Mouse, Rat	Clonality	Polyclonal
Applications	WB	Conjugation	Unconjugated
Form / Buffer	Liquid in 0.42% Potassium phosphate, 0.87% Sodium chloride, pH 7.3, 30% glycerol, and 0.01% sodium azide.		Storage at-20°C

BACKGROUND

May play a role in regulated exocytosis. Modulates the localization of synaptophysin/SYP into synaptic-like microvesicles and may therefore play a role in synaptic-like microvesicle formation and/or maturation . Involved in the regulation of short-term and long-term synaptic plasticity .

APPLICATION

To ensure optimal assay performance, AREX recommends conducting reagent titration tailored to each testing system for optimal detection results.

WB	1:500 - 1:2000
----	----------------

*Results are sample-specific. Please refer to your local assay conditions and test parameters for reference.

PRODUCT OVERVIEW

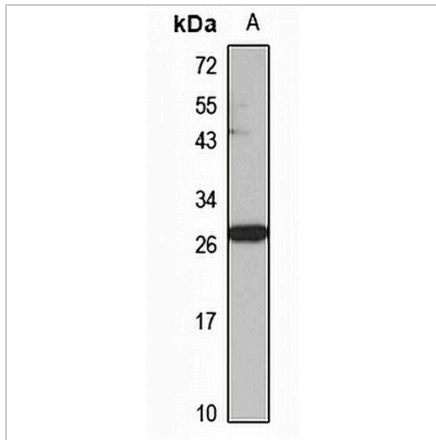
Description	Rabbit polyclonal antibody to Synaptogyrin-1
Specificity	Recognizes endogenous levels of Synaptogyrin-1 protein
Antibody Type	Primary antibody
Immunogen	Recombinant fusion protein of human Synaptogyrin-1. The exact sequence is proprietary.
Purification	The antibody was purified by immunogen affinity chromatography.
Molecular Weight	Predicted: 21; Observed: 25 kD
Form/Buffer	Liquid in 0.42% Potassium phosphate, 0.87% Sodium chloride, pH 7.3, 30% glycerol, and 0.01% sodium azide.
Alternative Names	Synaptogyrin-1
Gene Symbol	SYNGR1
Entrez Gene	9145(Human); 20972(Mouse); 29205(Rat)
SwissProt	O43759(Human); O55100(Mouse); Q62876(Rat)

*AREX continuously optimizes our products. Webpage content may not reflect the latest updates. For inquiries, please contact info@arexbio.com or your local distributor.

*Clone Number, Reactivity, Source/Host and Clonality can be found in the product name and Key Features section above.

DATASHEET**Synaptogyrin-1 Rabbit Polyclonal Antibody**

CAT. NO. APA17036

DATA

Western blot analysis of Synaptogyrin-1 expression in mouse pancreas (A) whole cell lysates. (Predicted band size: 21; 25 kD; Observed band size: 25 kD)

STORAGE

Store at 4°C short term. For long term storage, store at -20°C, avoiding freeze/thaw cycles.

NOTE

For Research Use Only. Not for diagnostic, therapeutics, prophylactic or in vivo use.