

DATASHEET

SYT13 Rabbit Polyclonal Antibody

CAT. NO. APA17038

KEY FEATURES

Target	SYT13	Source / Host	Rabbit
Reactivity	Human, Mouse, Rat	Clonality	Polyclonal
Applications	WB	Conjugation	Unconjugated
Form / Buffer	Liquid in 0.42% Potassium phosphate, 0.87% Sodium chloride, pH 7.3, 30% glycerol, and 0.01% sodium azide.		Storage at -20°C

BACKGROUND

May be involved in transport vesicle docking to the plasma membrane.

APPLICATION

To ensure optimal assay performance, AREX recommends conducting reagent titration tailored to each testing system for optimal detection results.

WB	1:500 - 1:2000
----	----------------

*Results are sample-specific. Please refer to your local assay conditions and test parameters for reference.

PRODUCT OVERVIEW

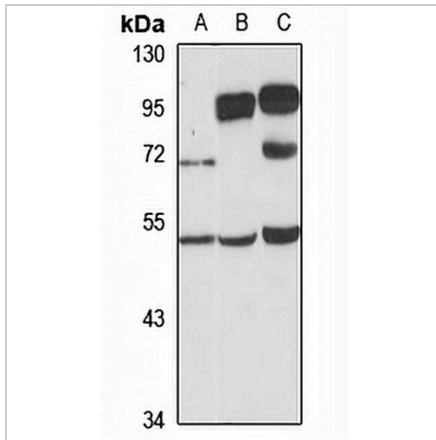
Description	Rabbit polyclonal antibody to SYT13
Specificity	Recognizes endogenous levels of SYT13 protein
Antibody Type	Primary antibody
Immunogen	Recombinant fusion protein of human SYT13. The exact sequence is proprietary.
Purification	The antibody was purified by immunogen affinity chromatography.
Molecular Weight	Predicted: 46 kD; Observed: 47 kD
Form/Buffer	Liquid in 0.42% Potassium phosphate, 0.87% Sodium chloride, pH 7.3, 30% glycerol, and 0.01% sodium azide.
Alternative Names	KIAA1427; Synaptotagmin-13; Synaptotagmin XIII; SytXIII
Gene Symbol	SYT13
Entrez Gene	57586(Human); 80976(Mouse); 80977(Rat)
SwissProt	Q7L8C5(Human); Q9EQT6(Mouse); Q925B5(Rat)

*AREX continuously optimizes our products. Webpage content may not reflect the latest updates. For inquiries, please contact info@arexbio.com or your local distributor.

*Clone Number, Reactivity, Source/Host and Clonality can be found in the product name and Key Features section above.

DATASHEET**SYT13 Rabbit Polyclonal Antibody**

CAT. NO. APA17038

DATA

Western blot analysis of SYT13 expression in U87MG (A), mouse brain (B), mouse heart (C) whole cell lysates. (Predicted band size: 46 kD; Observed band size: 47 kD)

STORAGE

Store at 4°C short term. For long term storage, store at -20°C, avoiding freeze/thaw cycles.

NOTE

For Research Use Only. Not for diagnostic, therapeutics, prophylactic or in vivo use.