

DATASHEET

TAF1 Rabbit Polyclonal Antibody

CAT. NO. APA17044

KEY FEATURES

Target	TAF1	Source / Host	Rabbit
Reactivity	Human, Mouse, Rat	Clonality	Polyclonal
Applications	WB, IHC	Conjugation	Unconjugated
Form / Buffer	Liquid in 0.42% Potassium phosphate, 0.87% Sodium chloride, pH 7.3, 30% glycerol, and 0.01% sodium azide.		Storage at -20°C

BACKGROUND

The TFIID basal transcription factor complex plays a major role in the initiation of RNA polymerase II (Pol II)-dependent transcription -dependent transcription . TFIID recognizes and binds promoters with or without a TATA box via its subunit TBP, a TATA-box-binding protein, and promotes assembly of the pre-initiation complex (PIC) . The TFIID complex consists of TBP and TBP-associated factors (TAFs), including TAF1, TAF2, TAF3, TAF4, TAF5, TAF6, TAF7, TAF8, TAF9, TAF10, TAF11, TAF12 and TAF13 . TAF1 is the largest component and core scaffold of the TFIID complex, involved in nucleating complex assembly . TAF1 forms a promoter DNA binding subcomplex of TFIID, together with TAF7 and TAF2 .

APPLICATION

To ensure optimal assay performance, AREX recommends conducting reagent titration tailored to each testing system for optimal detection results.

WB	1:500 - 1:2000
IHC	1:50 - 1:200

*Results are sample-specific. Please refer to your local assay conditions and test parameters for reference.

PRODUCT OVERVIEW

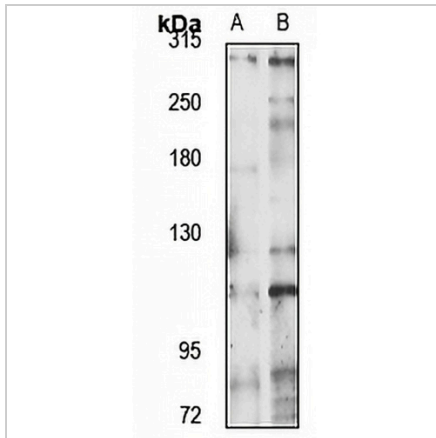
Description	Rabbit polyclonal antibody to TAF1
Specificity	Recognizes endogenous levels of TAF1 protein
Antibody Type	Primary antibody
Immunogen	Recombinant fusion protein of human TAF1. The exact sequence is proprietary.
Purification	The antibody was purified by immunogen affinity chromatography.
Molecular Weight	Predicted: 174-182; Observed: 300 kD
Form/Buffer	Liquid in 0.42% Potassium phosphate, 0.87% Sodium chloride, pH 7.3, 30% glycerol, and 0.01% sodium azide.
Alternative Names	BA2R; CCG1; CCG5; TAF2A; Transcription initiation factor TFIID subunit 1; Cell cycle gene 1 protein; TBP-associated factor 250 kDa; p250; Transcription initiation factor TFIID 250 kDa subunit; TAF(II)250; TAFII-250; TAFII250
Gene Symbol	TAF1
Entrez Gene	6872(Human); 270627(Mouse)
SwissProt	P21675(Human); Q80UV9(Mouse)

*AREX continuously optimizes our products. Webpage content may not reflect the latest updates. For inquiries, please contact info@arex.bio or your local distributor.

*Clone Number, Reactivity, Source/Host and Clonality can be found in the product name and Key Features section above.

DATASHEET**TAF1 Rabbit Polyclonal Antibody**

CAT. NO. APA17044

DATA

Western blot analysis of TAF1 expression in HeLa (A), NIH3T3 (B) whole cell lysates.
(Predicted band size: 174-182; 204-216 kD; Observed band size: 300 kD)

STORAGE

Store at 4°C short term. For long term storage, store at -20°C, avoiding freeze/thaw cycles.

NOTE

For Research Use Only. Not for diagnostic, therapeutics, prophylactic or in vivo use.